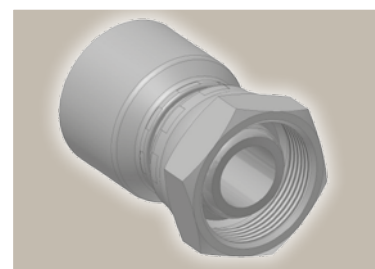
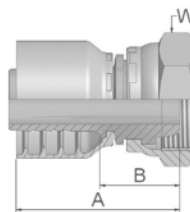
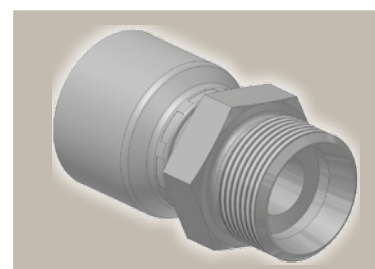
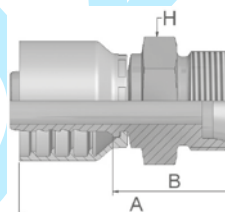


F4 Female French Gas Series Swivel – Straight (Ball Nose)



Part Number		Hose I.D.				Thread	Tube	A	B	W
46 series	48 series	DN	Inch	Size	mm	metric	O.D. mm	mm	mm	mm
1F446-13-4	1F448-13-4	6	1/4	-4	6.4	M20x1.5	13	48	24	24
1F446-13-5	1F448-13-5	8	5/16	-5	7.9	M20x1.5	13	48	24	24
1F446-13-6	1F448-13-6	10	3/8	-6	9.5	M20x1.5	13	45	22	24
1F446-17-8	1F448-17-8	12	1/2	-8	12.7	M24x1.5	17	49	25	30
1F446-21-10	1F448-21-10	16	5/8	-10	15.9	M30x1.5	21	50	25	36
1F446-27-12	1F448-27-12	19	3/4	-12	19.1	M36x1.5	26	59	33	46
1F446-33-16	1F448-33-16	25	1	-16	25.4	M45x1.5	33	63	33	55

F6 French Male Metric Series (24° Cone)



Part Number		Hose I.D.				Thread	Tube	A	B	H
46 series	48 series	DN	Inch	Size	mm	metric	O.D. mm	mm	mm	mm
1F646-14-6	1F648-14-6	10	3/8	-6	9.5	M20x1.5	14	50	27	22
1F646-20-10	1F648-20-10	16	5/8	-10	15.9	M27x1.5	20	59	33	30

Approved **fitting series** for hose types, depending on size:

Also available in stainless steel. Details can be found in CAT 4400.1/UK

46 or 48	441	441RH	461LT	462	462ST	462TC	462ST	629PU	692PU Twin
46	463	492	492ST	492TC	692	692Twin	692TC	BCH1	
48	301SN	301TC	304	387	387ST	387TC	421RH	421SN	426
	436	441RH	462PU	462PU Twin	BCH2	HT2	...		
	471TC	477	477ST	477TC	477RH	487	487ST	487TC	493
	787	787TC	787ST	797	797TC	797ST	811	881	