

Flange MF1/MF2 ¹Foot brackets MS1 ²Pivot bracket with
rigid bearing AB7 ³Swivel eye ⁴
bracket MP6Clevis bracket MP2 ⁵

Ø 32	P1C-4KMB	P1C-4KMF	P1C-4KMD	P1C-4KMSA	P1C-4KMT
Ø 40	P1C-4LMB	P1C-4LMF	P1C-4LMD	P1C-4LMSA	P1C-4LMT
Ø 50	P1C-4MMB	P1C-4MMF	P1C-4MMD	P1C-4MMSA	P1C-4MMT
Ø 63	P1C-4NMB	P1C-4NMF	P1C-4NMD	P1C-4NMSA	P1C-4NMT
Ø 80	P1C-4PMB	P1C-4PMF	P1C-4PMD	P1C-4PMSA	P1C-4PMT
Ø 100	P1C-4QMB	P1C-4QMF	P1C-4QMD	P1C-4QMSA	P1C-4QMT
Ø 125	P1C-4RMB	P1C-4RMF	P1C-4RMD	P1C-4RMSA	P1C-4RMT

Clevis bracket MP4 ⁶Clevis bracket AB6 ⁷Pivot bracket with ⁸
swivel bearing CS73 and 4 positions
flange JP1Pivot brackets AT4 ¹⁰
for MT* trunnion

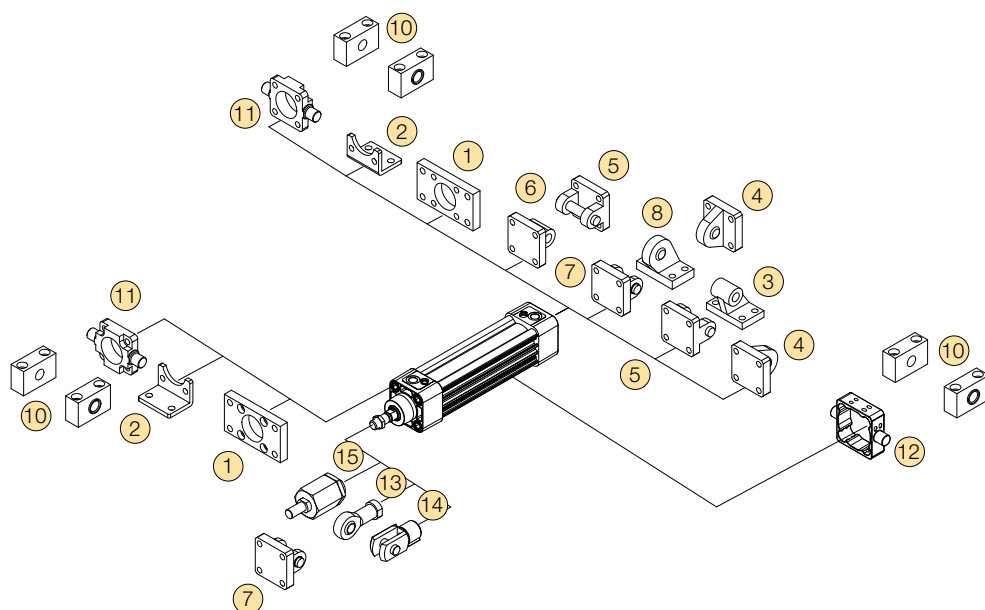
Ø 32	P1C-4KME	P1C-4KMCA	P1C-4KMA	P1E-6KB0	9301054261
Ø 40	P1C-4LME	P1C-4LMCA	P1C-4LMA	P1E-6LB0	9301054262
Ø 50	P1C-4MME	P1C-4MMCA	P1C-4MMA	P1E-6MB0	9301054262
Ø 63	P1C-4NME	P1C-4NMCA	P1C-4NMA	P1E-6NB0	9301054264
Ø 80	P1C-4PME	P1C-4PMCA	P1C-4PMA	P1E-6PB0	9301054264
Ø 100	P1C-4QME	P1C-4QMCA	P1C-4QMA	P1E-6QB0	9301054266
Ø 125	P1C-4RME	P1C-4RMCA	P1C-4RMA		9301054266

Flange trunnion ¹¹
MT5/MT6Centre trunnion MT4 ¹²Swivel rod eye AP6 ¹³Clevis AP2 ¹⁴Flexo coupling PM5 ¹⁵

Ø 32	P1D-4KMYF	Factory fitted	P1C-4KRS	P1C-4KRC	P1C-4KRF
Ø 40	P1D-4LMYF	Factory fitted	P1C-4LRS	P1C-4LRC	P1C-4LRF
Ø 50	P1D-4MMYF	Factory fitted	P1C-4MRS	P1C-4MRC	P1C-4MRF
Ø 63	P1D-4NMYF	Factory fitted	P1C-4MRS	P1C-4MRC	P1C-4MRF
Ø 80	P1D-4PMYF	Factory fitted	P1C-4PRS	P1C-4PRC	P1C-4PRF
Ø 100	P1D-4QMYF	Factory fitted	P1C-4PRS	P1C-4PRC	P1C-4PRF
Ø 125		Factory fitted	P1C-4RRS	P1C-4RRC	P1C-4RRF

Zinc-plated
steel nut MR9
(pack of 10)

Ø 32	P14-4KRPZ
Ø 40	P14-4LRPZ
Ø 50	P14-4MRPZ
Ø 63	P14-4MRPZ
Ø 80	P14-4PRPZ
Ø 100	P14-4PRPZ
Ø 125	P14-4RRPZ

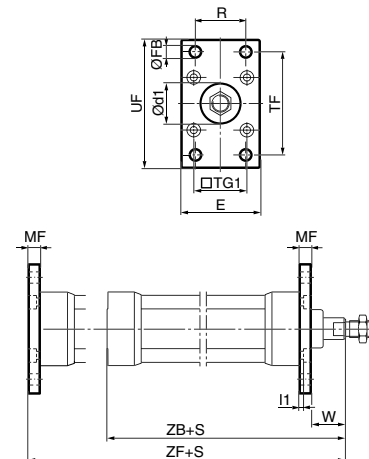


Type	Description	For mounting screws in stainless steel see page 52	Cyl. bore Ø mm	Weight kg	Order code
Flange MF1/MF2	Intended for fixed mounting of cylinder. Flange can be fitted to front or rear end cover of cylinder. Materials Flange: Surface-treated steel Mounting screws acc. to DIN 6912: Zinc-plated steel 8.8 Supplied complete with mounting screws for attachment to cylinder.		32	0,23	P1C-4KMB
			40	0,28	P1C-4LMB
			50	0,53	P1C-4MMB
			63	0,71	P1C-4NMB
			80	1,59	P1C-4PMB
			100	2,19	P1C-4QMB
			125	3,78	P1C-4RMB



Cyl. bore mm	d1 H11 mm	FB H13 mm	TG1 mm	E mm	R JS14 mm	MF JS14 mm	TF JS14 mm	UF mm	I1 -0,5 mm	W* mm	ZF* mm	ZB* mm
32	30	7	32,5	45	32	10	64	80	5,0	16	130	123,5
40	35	9	38,0	52	36	10	72	90	5,0	20	145	138,5
50	40	9	46,5	65	45	12	90	110	6,5	25	155	146,5
63	45	9	56,5	75	50	12	100	120	6,5	25	170	161,5
80	45	12	72,0	95	63	16	126	150	8,0	30	190	177,5
100	55	14	89,0	115	75	16	150	170	8,0	35	205	192,5
125	60	16	110,0	140	90	20	180	205	10,5	45	245	230,5

S = Stroke length * Does not apply to cylinders with lock unit

**Foot brackets MS1**

Intended for fixed mounting of cylinder. Foot bracket can be fitted to front and rear end covers of cylinder.

Materials
Foot bracket: Surface-treated steel
Mounting screws acc. to DIN 912: Zinc-plated steel 8.8

Supplied in pairs with mounting screws for attachment to cylinder.

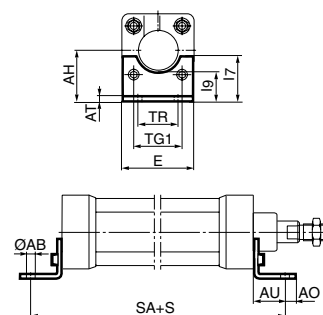


32	0,06**	P1C-4KMF
40	0,08**	P1C-4LMF
50	0,16**	P1C-4MMF
63	0,25**	P1C-4NMF
80	0,50**	P1C-4PMF
100	0,85**	P1C-4QMF
125	1,48**	P1C-4RMF

** Weight per item

Cyl. bore mm	AB H14 mm	TG1 mm	E mm	TR JS14 mm	AO mm	AU mm	AH JS15 mm	I7 mm	AT mm	I9 JS14 mm	SA* mm
32	7	32,5	45	32	10	24	32	30	4,5	17,0	142
40	9	38,0	52	36	8	28	36	30	4,5	18,5	161
50	9	46,5	65	45	13	32	45	36	5,5	25,0	170
63	9	56,5	75	50	13	32	50	35	5,5	27,5	185
80	12	72,0	95	63	14	41	63	49	6,5	40,5	210
100	14	89,0	115	75	15	41	71	54	6,5	43,5	220
125	16	110,0	140	90	22	45	90	71	8,0	60,0	250

S = Stroke length * Does not apply to cylinders with lock unit

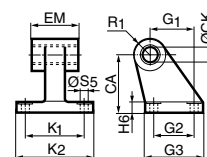
**Pivot bracket with rigid bearing AB7**

Intended for flexible mounting of cylinder. The pivot bracket can be combined with clevis bracket MP2.

Materials
Pivot bracket: Surface-treated aluminium, black
Bearing: Sintered oil-bronze bushing

32	0,06	P1C-4KMD
40	0,08	P1C-4LMD
50	0,15	P1C-4MMD
63	0,20	P1C-4NMD
80	0,33	P1C-4PMD
100	0,49	P1C-4QMD
125	1,02	P1C-4RMD

Cyl. bore mm	CK H9 mm	S5 H13 mm	K1 JS14 mm	K2 mm	G1 JS14 mm	G2 JS14 mm	EM mm	G3 mm	CA JS15 mm	H6 mm	R1 mm
32	10	6,6	38	51	21	18	25,5	31	32	8	10,0
40	12	6,6	41	54	24	22	27,0	35	36	10	11,0
50	12	9,0	50	65	33	30	31,0	45	45	12	13,0
63	16	9,0	52	67	37	35	39,0	50	50	12	15,0
80	16	11,0	66	86	47	40	49,0	60	63	14	15,0
100	20	11,0	76	96	55	50	59,0	70	71	15	19,0
125	25	14,0	94	124	70	60	69,0	90	90	20	22,5

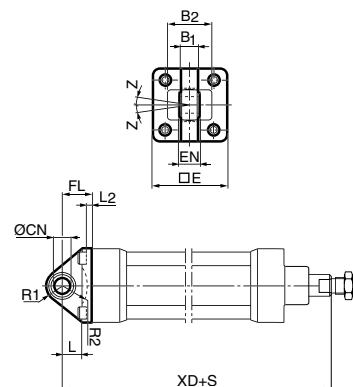


Type	Description	For mounting screws in stainless steel see page 52	Cyl. bore Ø mm	Weight kg	Order code
Swivel eye bracket MP6	Intended for use together with clevis bracket GA Material Bracket: Surface-treated aluminium, black Swivel bearing acc. to DIN 648K: Hardened steel Supplied complete with mounting screws for attachment to cylinder.		32	0,08	P1C-4KMSA
			40	0,11	P1C-4LMSA
			50	0,20	P1C-4MMSA
			63	0,27	P1C-4NMSA
			80	0,52	P1C-4PMSA
			100	0,72	P1C-4QMSA
			125	1,53	P1C-4RMSA



Cyl. bore mm	E	B1	B2	EN	R1	R2	FL	I2	L	CN H7	XD*	Z
mm	mm	mm	mm	mm	mm	mm	mm	mm	mm	mm	mm	mm
32	45	10,5	-	14	16	-	22	5,5	12	10	142	4°
40	52	12,0	-	16	18	-	25	5,5	15	12	160	4°
50	65	15,0	51	21	21	19	27	6,5	15	16	170	4°
63	75	15,0	-	21	23	-	32	6,5	20	16	190	4°
80	95	18,0	-	25	29	-	36	10,0	20	20	210	4°
100	115	18,0	-	25	31	-	41	10,0	25	20	230	4°
125	140	25,0	-	37	40	-	50	10,0	30	30	275	4°

S = Stroke length * Does not apply to cylinders with lock unit

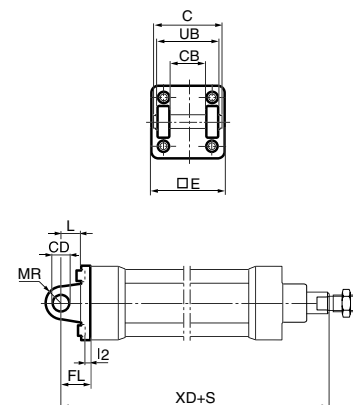



Clevis bracket MP2	Intended for flexible mounting of cylinder. Clevis bracket MP2 can be combined with clevis bracket MP4. Materials Clevis bracket: Surface-treated aluminium, black Pin: Surface hardened steel Circlips according to DIN 471: Spring steel Mounting screws acc. to DIN 912: Zinc-plated steel 8.8 Supplied complete with mounting screws for attachment to cylinder.		32	0,08	P1C-4KMT
			40	0,11	P1C-4LMT
			50	0,14	P1C-4MMT
			63	0,29	P1C-4NMT
			80	0,36	P1C-4PMT
			100	0,64	P1C-4QMT
			125	1,17	P1C-4RMT



Cyl. bore mm	C	E	UB h14	CB H14	FL ±0,2	L	I2	CD H9	MR	XD*
mm	mm	mm	mm	mm	mm	mm	mm	mm	mm	mm
32	53	45	45	26	22	13	5,5	10	10	142
40	60	52	52	28	25	16	5,5	12	12	160
50	68	65	60	32	27	16	6,5	12	12	170
63	78	75	70	40	32	21	6,5	16	16	190
80	98	95	90	50	36	22	10,0	16	16	210
100	118	115	110	60	41	27	10,0	20	20	230
125	139	140	130	70	50	30	10,0	25	25	275

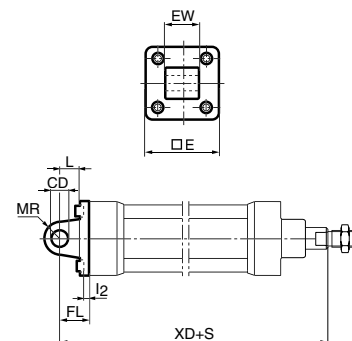
S = Stroke length * Does not apply to cylinders with lock unit




Type	Description	For mounting screws in stainless steel see page 52	Cyl. bore Ø mm	Weight kg	Order code
Clevis bracket MP4 	Intended for flexible mounting of cylinder. Clevis bracket MP4 can be combined with clevis bracket MP2. Materials Clevis bracket: Surface-treated aluminium, black Mounting screws acc. to DIN 912: Zinc-plated steel 8.8 Supplied complete with mounting screws for attachment to cylinder.		32	0,09	P1C-4KME
			40	0,13	P1C-4LME
			50	0,17	P1C-4MME
			63	0,36	P1C-4NME
			80	0,46	P1C-4PME
			100	0,83	P1C-4QME
			125	1,53	P1C-4RME

Cyl. bore mm	E	EW	FL	L ±0,2 mm	I2	CD	MR H9 mm	XD*
32	45	26	22	13	5,5	10	10	142
40	52	28	25	16	5,5	12	12	160
50	65	32	27	16	6,5	12	12	170
63	75	40	32	21	6,5	16	16	190
80	95	50	36	22	10,0	16	16	210
100	115	60	41	27	10,0	20	20	230
125	140	70	50	30	10,0	25	25	275

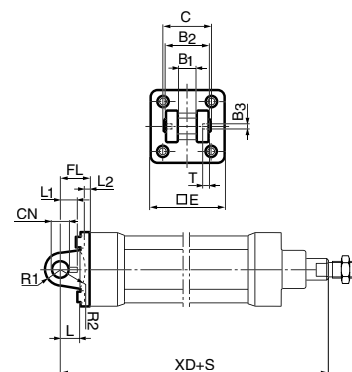
S = Stroke length * Does not apply to cylinders with lock unit




Clevis bracket AB6 	Intended for flexible mounting of cylinder. Clevis bracket GA can be combined with pivot bracket with swivel bearing, swivel eye bracket and swivel rod eye. Materials Clevis bracket: Surface-treated aluminium Pin: Surface hardened steel Locking pin: Spring steel Circlips according to DIN 471: Spring steel Mounting screws acc. to DIN 912: Zinc-plated steel 8.8 Supplied complete with mounting screws for attachment to cylinder.		32	0,09	P1C-4KMCA
			40	0,13	P1C-4LMCA
			50	0,17	P1C-4MMCA
			63	0,36	P1C-4NMCA
			80	0,58	P1C-4PMCA
			100	0,89	P1C-4QMCA
			125	1,75	P1C-4RMCA

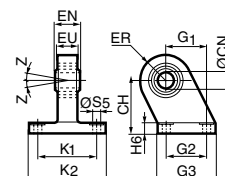
Cyl. bore mm	C	E	B2 d12 mm	B1 H14 mm	T mm	B3 mm	R2 mm	L1 mm	FL ±0,2 mm	I2	L	CN F7 mm	R1 mm	XD*
32	41	45	34	14	3	3,3	17	11,5	22	5,5	12	10	11	142
40	48	52	40	16	4	4,3	20	12,0	25	5,5	15	12	13	160
50	54	65	45	21	4	4,3	22	14,0	27	6,5	17	16	18	170
63	60	75	51	21	4	4,3	25	14,0	32	6,5	20	16	18	190
80	75	95	65	25	4	4,3	30	16,0	36	10,0	20	20	22	210
100	85	115	75	25	4	4,3	32	16,0	41	10,0	25	20	22	230
125	110	140	97	37	6	6,3	42	24,0	50	10,0	30	30	30	275

S = Stroke length * Does not apply to cylinders with lock unit



Type	Description	For mounting screws in stainless steel see page 52	Cyl. bore Ø mm	Weight kg	Order code
Pivot bracket with swivel bearing CS7 	Intended for use together with clevis bracket GA.		32	0,18	P1C-4KMA
			40	0,25	P1C-4LMA
	Material		50	0,47	P1C-4MMA
	Pivot bracket: Surface-treated steel, black		63	0,57	P1C-4NMA
	Swivel bearing acc. to DIN 648K: Hardened steel		80	1,05	P1C-4PMA
			100	1,42	P1C-4QMA
			125	3,10	P1C-4RMA

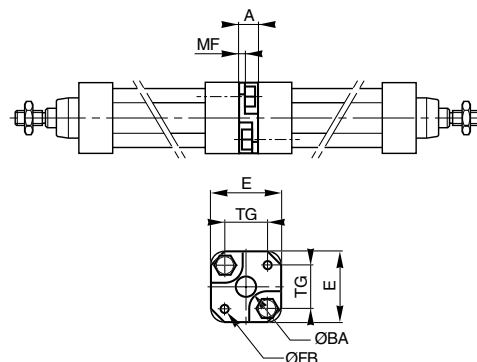
Cyl. bore mm	CN H7 mm	S5 H13 mm	K1 JS14 mm	K2 mm	EU mm	G1 JS14 mm	G2 JS14 mm	EN mm	G3 mm	CH JS15 mm	H6 mm	ER mm	Z mm
32	10	6,6	38	51	10,5	21	18	14	31	32	10	16	4°
40	12	6,6	41	54	12,0	24	22	16	35	36	10	18	4°
50	16	9,0	50	65	15,0	33	30	21	45	45	12	21	4°
63	16	9,0	52	67	15,0	37	35	21	50	50	12	23	4°
80	20	11,0	66	86	18,0	47	40	25	60	63	14	28	4°
100	20	11,0	76	96	18,0	55	50	25	70	71	15	30	4°
125	30	14,0	94	124	25,0	70	60	37	90	90	20	40	4°



3 and 4 positions flange JP1 Mounting kit for back to back mounted cylinders, 3 and 4 position cylinders.



Cyl. bore mm	E mm	TG mm	ØFB mm	MF mm	A mm	ØBA mm
32	50	32,5	6,5	5	16	30
40	60	38,0	6,5	5	16	35
50	66	46,5	8,5	6	20	40
63	80	56,5	8,5	6	20	45
80	100	72,0	10,5	8	25	45
100	118	89,0	10,5	8	25	55



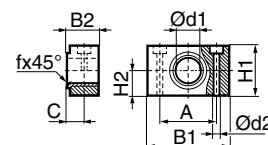
Pivot brackets AT4 for MT* trunnion Intended for use together with centre trunnion MT4.

Material
 Pivot bracket: Surface-treated aluminium
 Bearing acc. to DIN 1850 C: Sintered oil-bronze bushing

Supplied in pairs.



Cyl. bore mm	B1 mm	B2 mm	A mm	C mm	d1 mm	d2 H13 mm	H1 mm	H2 mm	fx45° min mm
32	46	18,0	32	10,5	12	6,6	30	15	1,0
40	55	21,0	36	12,0	16	9,0	36	18	1,6
50	55	21,0	36	12,0	16	9,0	36	18	1,6
63	65	23,0	42	13,0	20	11,0	40	20	1,6
80	65	23,0	42	13,0	20	11,0	40	20	1,6
100	75	28,5	50	16,0	25	14,0	50	25	2,0
125	75	28,5	50	16,0	25	14,0	50	25	2,0



* Weight per item.

Type	Description	For mounting screws in stainless steel see page 52	Cyl. bore Ø mm	Weight kg	Order code
Centre trunnion MT4	Intended for articulated mounting of cylinder. The trunnion is factory-fitted in the centre of the cylinder or at an optional location specified by the XV-measure – see the order code key. Combined with pivot bracket for MT4. Material: Trunnion P1D-S & P1D-T: zinc plated steel		32 40 50 63 80 100 125	0,13 0,31 0,37 0,69 0,89 1,58 2,60	See order code key


Centre trunnion MT4 for P1D-C Ultra Clean only

Centre trunnion MT4 for P1D-T

Trunnion centred

The centre trunnion for the P1D-S, P1D-C and P1D-T is ordered with letter D in position 17 (no dimension specified in positions 18-20, letters NNN). See the order code key.

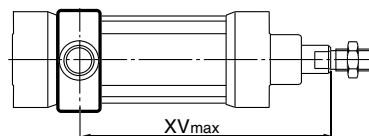
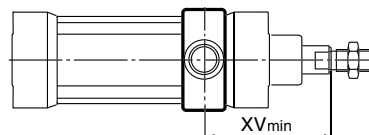
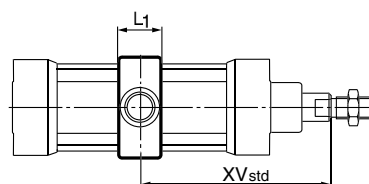
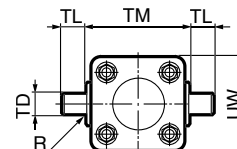
Trunnion with optional location

The centre trunnion for the P1D-S, P1D-C and P1D-T is ordered with a letter in position 17 and desired XV-measure (3-digit measure in mm) in positions 18-20. See the order code key.

Trunnion loose

P1D-S can also be ordered with the centre trunnion loosely fitted to the cylinder (not fixed in position). This allows the position to be established at the time of installation.

Ordered with a letter in position 17 and 000 in positions 18-20. Please refer to the order code key.



$$XVstd = X1 + \text{Stroke length}/2$$

$$XVmax = X2 + \text{Stroke length}$$

* Trunnion option is not available for the P1D-C Pro Clean version.

Cyl. bore	TM	TL	TD	R	UW	L1	X1	XV-min	X2	UW	L1	XV-min	X2	XV-min	X2	XV-min	X2	Stroke min
h14	h14	e9																
mm	mm	mm	mm	mm	mm	mm	mm	mm	mm	mm	mm	mm	mm	mm	mm	mm	mm	mm
32	50	12	12	1,0	52	18	73,0	89	57	46	15	62	84	121	88	69,5	76	0
40	63	16	16	1,6	59	20	82,5	95	70	59	20	73	92	125	99	78,0	87	0
50	75	16	16	1,6	71	20	90,0	113	67	69	20	81	99	140	93	85,5	95	0
63	90	20	20	1,6	84	26	97,5	118	78	84	25	89	106	155	114	103,5	91	15
80	110	20	20	1,6	105	26	110,0	132	88	102	25	98	122	177	132	112,5	107	10
100	132	25	25	2,0	129	32	120,0	140	100	125	30	111	129	197	156	-	-	-
125	160	25	25	2,0	159	33	145,0	168	122	155	32	132	158	224	177	-	-	-

Flange trunnion MT5/MT6


Intended for articulated mounting of cylinder. This trunnion can be flange mounted on the front or rear end cover of all P1D cylinders.

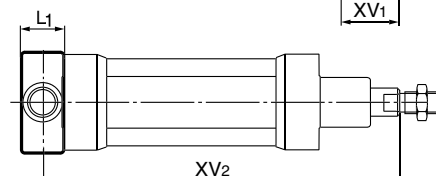
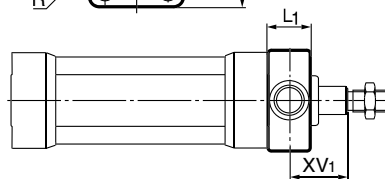
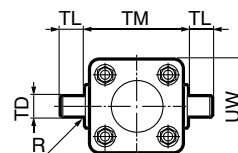
Material:

Trunnion: zinc plated steel

Screws: zinc plated steel, 8.8

Delivered complete with mounting screws for attachment to the cylinder


32	0,17	P1D-4KMYF
40	0,43	P1D-4LMYF
50	0,55	P1D-4MMYF
63	1,10	P1D-4NMYF
80	1,66	P1D-4PMYF
100	3,00	P1D-4QMYF




Cyl. bore	TM	TL	TD	R	UW	L1	XV ₁ *	X*	Y
mm	h14	h14	e9	mm	mm	mm	mm	mm	mm
32	50	12	12	1,0	46	14	19,5	126,5	11
40	63	16	16	1,6	59	19	21,0	144,0	14
50	75	16	16	1,6	69	19	28,0	152,0	20
63	90	20	20	1,6	84	24	25,5	169,5	20
80	110	20	20	1,6	102	24	34,5	185,5	26
100	132	25	25	2,0	125	29	37,0	203,0	31

$XV_2 = X + \text{Stroke length}$ * Does not apply to cylinders with lock unit

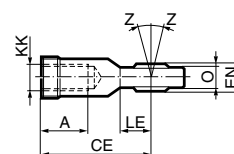
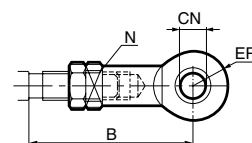
To fit a flange mounted trunnion at the front end cover of a P1D cylinder with lock unit, the piston rod must be extended. This is in order to provide the same WH dimensions as for the P1D base cylinder with dimension Y.


Type	Description	Cyl. bore Ø mm	Weight kg	Order code
Swivel rod eye AP6 	Swivel rod eye for articulated mounting of cylinder. Swivel rod eye can be combined with clevis bracket GA. Maintenance-free. Materials Swivel rod eye: Zinc-plated steel Swivel bearing according to DIN 648K: Hardened steel	32	0,08	P1C-4KRS
		40	0,12	P1C-4LRS
		50	0,25	P1C-4MRS
		63	0,25	P1C-4MRS
		80	0,46	P1C-4PRS
		100	0,46	P1C-4PRS
		125	1,28	P1C-4RRS


Stainless steel swivel rod eye AP6 	Stainless-steel swivel rod eye for articulated mounting of cylinder. Swivel rod eye can be combined with clevis bracket GA. Maintenance-free. Materials Swivel rod eye: Stainless steel Swivel bearing according to DIN 648K: Stainless steel Use stainless steel nut with stainless steel swivel rod eye.	32	0,08	P1S-4JRT
		40	0,12	P1S-4LRT
		50	0,25	P1S-4MRT
		63	0,25	P1S-4MRT
		80	0,46	P1S-4PRT
		100	0,46	P1S-4PRT
		125	1,28	P1S-4RRT

According to ISO 8139

Cyl. bore mm	A mm	B min mm	B max mm	CE mm	CN H9 mm	EN h12 mm	ER mm	KK	LE min mm	N mm	O mm	Z
32	20	48,0	55	43	10	14	14	M10x1,25	15	17	10,5	12°
40	22	56,0	62	50	12	16	16	M12x1,25	17	19	12,0	12°
50	28	72,0	80	64	16	21	21	M16x1,5	22	22	15,0	15°
63	28	72,0	80	64	16	21	21	M16x1,5	22	22	15,0	15°
80	33	87,0	97	77	20	25	25	M20x1,5	26	32	18,0	15°
100	33	87,0	97	77	20	25	25	M20x1,5	26	32	18,0	15°
125	51	123,5	137	110	30	37	35	M27x2	36	41	25,0	15°

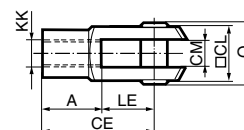
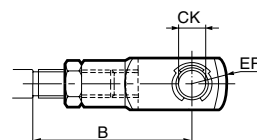


Clevis AP2 	Clevis for articulated mounting of cylinder. Material Clevis, clip: Galvanized steel Pin: Hardened steel	32	0,09	P1C-4KRC
		40	0,15	P1C-4LRC
		50	0,35	P1C-4MRC
		63	0,35	P1C-4MRC
		80	0,75	P1C-4PRC
		100	0,75	P1C-4PRC
		125	2,10	P1C-4RRC

Stainless steel clevis AP2 	Stainless-steel clevis for articulated mounting of cylinder. Material Clevis: Stainless steel Pin: Stainless steel Circlips according to DIN 471: Stainless steel Use stainless steel nut with stainless steel swivel rod eye.	32	0,09	P1S-4JRD
		40	0,15	P1S-4LRD
		50	0,35	P1S-4MRD
		63	0,35	P1S-4MRD
		80	0,75	P1S-4PRD
		100	0,75	P1S-4PRD
		125	2,10	P1S-4RRD

According to ISO 8140

Cyl. bore mm	A mm	B min mm	B max mm	CE mm	CK h11/E9 mm	CL mm	CM mm	ER mm	KK	LE mm	O mm
32	20	45,0	52	40	10	20	10	16	M10x1,25	20	28,0
40	24	54,0	60	48	12	24	12	19	M12x1,25	24	32,0
50	32	72,0	80	64	16	32	16	25	M16x1,5	32	41,5
63	32	72,0	80	64	16	32	16	25	M16x1,5	32	41,5
80	40	90,0	100	80	20	40	20	32	M20x1,5	40	50,0
100	40	90,0	100	80	20	40	20	32	M20x1,5	40	50,0
125	56	123,5	137	110	30	55	30	45	M27x2	54	72,0

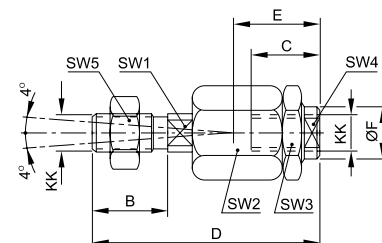


Type	Description	Cyl. bore Ø mm	Weight kg	Order code
Flexo coupling PM5	Flexo coupling for articulated mounting of piston rod. Flexo fitting is intended to take up axial angle errors within a range of $\pm 4^\circ$. Material Flexo coupling, nut: Zinc-plated steel	32	0,21	P1C-4KRF
		40	0,22	P1C-4LRF
		50	0,67	P1C-4MRF
		63	0,67	P1C-4MRF
		80	0,72	P1C-4PRF
		100	0,72	P1C-4PRF
		125	1,80	P1C-4RRF



Supplied complete with galvanized adjustment nut.

Cyl. bore mm	KK mm	B mm	C mm	D mm	E mm	ØF mm	SW1 mm	SW2 mm	SW3 mm	SW4 mm	SW5 mm
32	M10x1,25	20	23	73	31	21	12	30	30	19	17
40	M12x1,25	24	23	77	31	21	12	30	30	19	19
50	M16x1,5	32	32	108	45	33,5	19	41	41	30	24
63	M16x1,5	32	32	108	45	33,5	19	41	41	30	24
80	M20x1,5	40	42	122	56	33,5	19	41	41	30	30
100	M20x1,5	40	42	122	56	33,5	19	41	41	30	30
125	M27x2	54	48	147	51	39	24	55	55	32	41

**Nut MR9**

Intended for fixed mounting of accessories to the piston rod.
Material: Zinc-plated steel

All P1D cylinders are delivered with a zinc-plated steel piston rod nut, except P1D Ultra Clean, which is delivered with a stainless steel piston rod nut instead.

32	0,007	P14-4KRPZ
40	0,010	P14-4LRPZ
50	0,021	P14-4MRPZ
63	0,021	P14-4MRPZ
80	0,040	P14-4PRPZ
100	0,040	P14-4PRPZ
125	0,100	P14-4RRPZ

Stainless steel nut MR9

Intended for fixed mounting of accessories to the piston rod.

Material: Stainless steel A2

All P1D cylinders are delivered with a zinc-plated steel piston rod nut, except P1D Ultra Clean, which is delivered with a stainless steel piston rod nut instead.

32	0,007	P14-4KRPS
40	0,010	P14-4LRPS
50	0,021	P14-4MRPS
63	0,021	P14-4MRPS
80	0,040	P14-4PRPS
100	0,040	P14-4PRPS
125	0,100	P14-4RRPS

Acid-proof nut MR9

Intended for fixed mounting of accessories to the piston rod.

Material: Acid-proof steel A4

Cylinders with acid-proof piston rod are supplied with nut of acid-proof steel

32	0,007	P14-4KRPX
40	0,010	P14-4LRPX
50	0,021	P14-4MRPX
63	0,021	P14-4MRPX
80	0,040	P14-4PRPX
100	0,040	P14-4PRPX
125	0,100	P14-4RRPX

According to DIN 439 B

Cyl. bore mm	A mm	B mm	C mm
32	17	5,0	M10x1,25
40	19	6,0	M12x1,25
50	24	8,0	M16x1,5
63	24	8,0	M16x1,5
80	30	10,0	M20x1,5
100	30	10,0	M20x1,5
125	41	13,5	M27x2

Supplied as pack of 10 off
Weight per item

