

PV

For PV pump series

AC

Accessories for controls

Function

Mounting bolts

Threads

Seals

Adjustment

Solenoid

Solenoid accessories

Nominal pressure

Code	Function
1P	Max. pressure relief
1E	1 pressure, electrical unloading stand by default
2P	2 pressures, electrical selection
2E	2 pressures + stand by electrical selection low pressure default
2M	2 pressures + stand by electrical selection stand by default

Code	Threads
M	Metric
S	SAE / UNC

Code	Seals
N	NBR
V	FPM

Code	Mounting bolts
C	For single controls
S	Without bolts
M	For code UP*/MT*

Code	Adjustment
S	Spindle with lock nut
L	DIN lock 1)

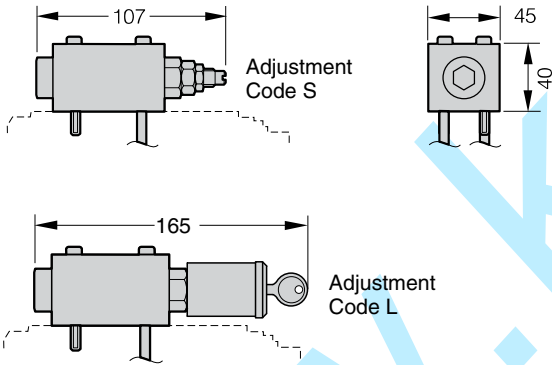
Code	Nominal pressure
35	350 bar
42	420 bar

Code	Solenoid accessories
omit	For function 1P
W	DIN plug socket without plug

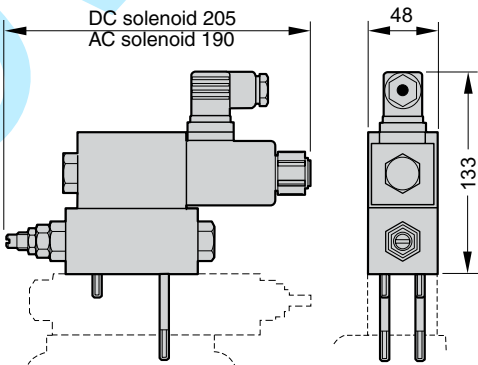
Code	Solenoid voltage
omit	For function 1P
Y	110V/50Hz - 120V/60Hz
T	220V/50Hz - 240V/60Hz
J	24V DC

1) only for 1P & 2P

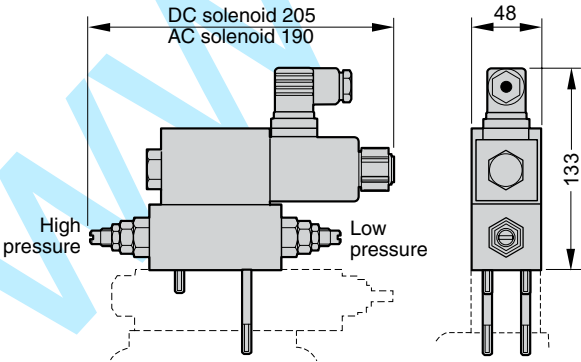
Dimensions
PVAC1P*



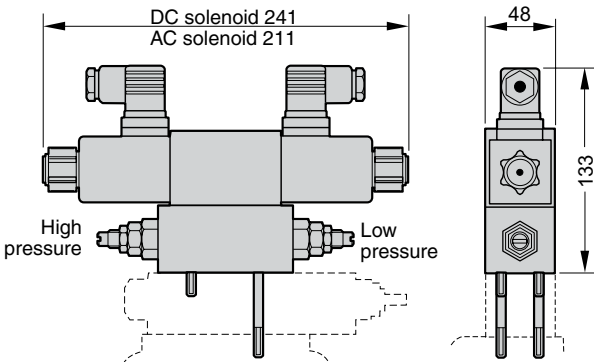
PVAC1E*



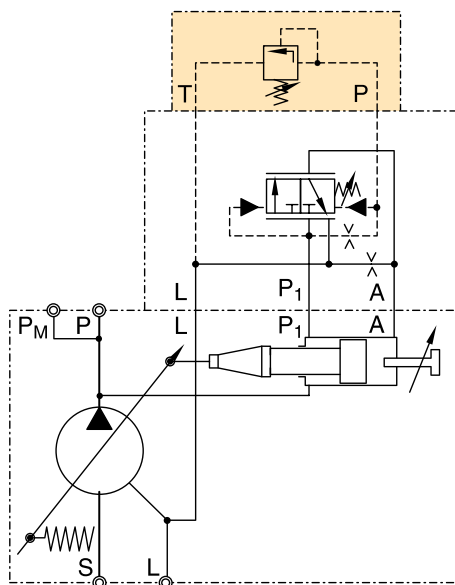
PVAC2P*



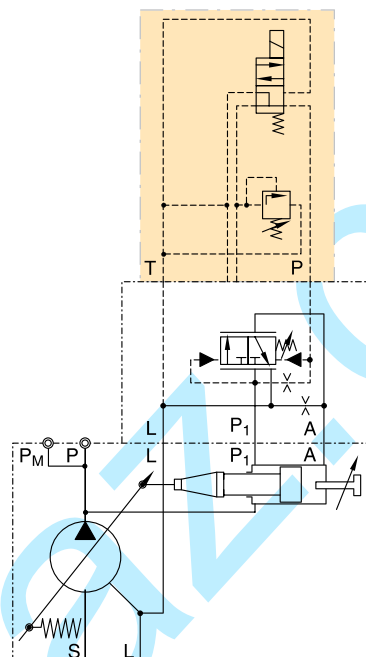
PVAC2M*/PVAC2E*



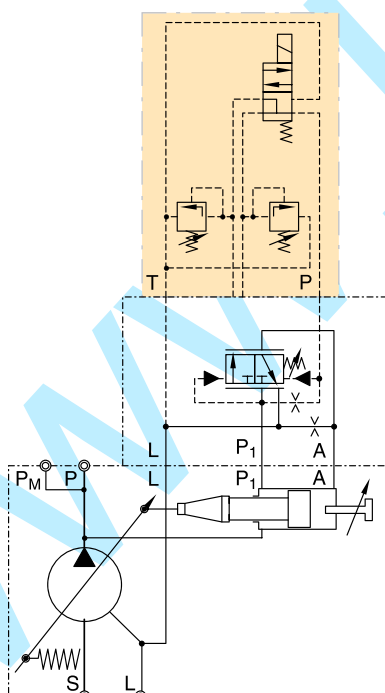
Schematics PVAC1P*



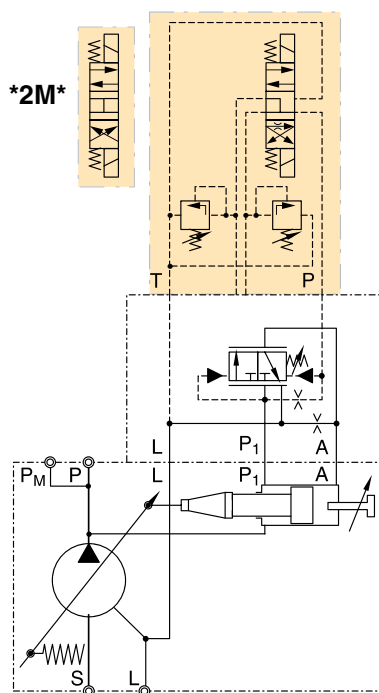
Schematics PVAC1E*



Schematics PVAC2P*



Schematics PVAC2M*/PVAC2E*

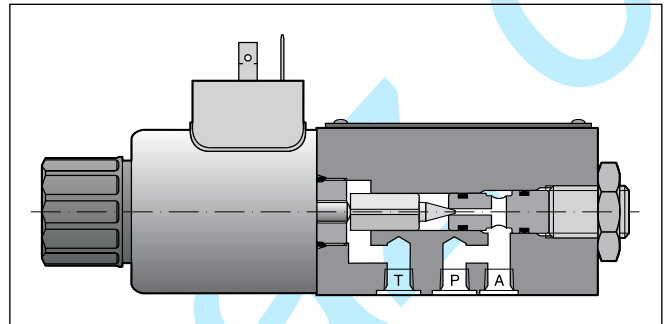
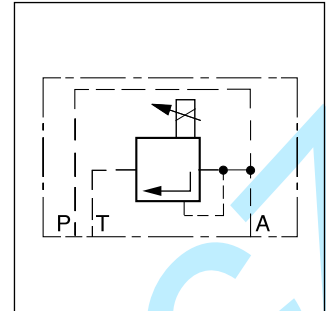


Proportional pressure relief valve PVACRE*

Function

When the pressure in port P exceeds the pressure setting at the solenoid, the poppet opens to port T and limits the pressure in port P to the adjusted level.

The optimum performance can be achieved in combination with the digital amplifier module PCD00A-400 (see catalogue HY11-3500 for reference).



Technical data

General		
Nominal size		DIN NG06 / CETOP03 / NFPA D03
Mounting position		as desired, horizontal mounting preferred
Ambient temperature	[°C]	-20 ... +70
Weight	[kg]	1.8
Hydraulic		
Max. operating pressure	[bar]	Ports P and A up to 420; port T depressurized
Pressure stages	[bar]	350, 420
Fluid		Hydraulic oil as per DIN 51524 ... 525
Viscosity, recommended permitted	[cSt]/ [mm²/s]	30 ... 80
	[cSt]/ [mm²/s]	12 ... 380
Fluid temperature	[°C]	-20 ... +60
Filtration		ISO 4406 (1999), 18/16/13
Linearity	[%]	±2.8
Repeatability	[%]	<±1
Hysteresis	[%]	±1.5 of p _{max}
Electrical		
Duty ratio	[%]	100 ED
Protection class		IP 65 in accordance with EN 60529 (plugged and mounted)
Nominal voltage	[V]	16 (1.3 A max. current)
Coil resistance	[Ohm]	4 at 20°C
Solenoid connection		Connector as per EN 175301-803
Power amplifier, recommended		PCD00A-400

Ordering code proportional pressure relief valve

PV	AC	RE				
Pump series PV	Accessories for controller	Prop. pressure valve	Mounting bolts	Thread option	Seal	Nominal pressure

Code	Mounting bolts/ ports
C	For single controller
S	Without bolts
M	For code UP*/MT* design series 45/46

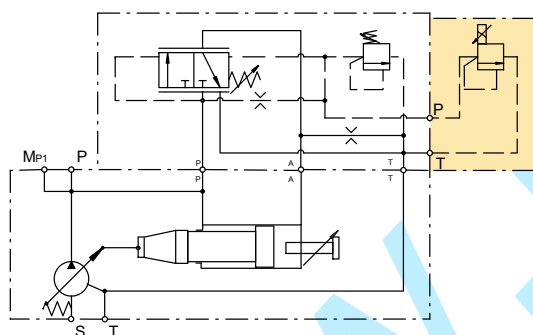
Code	Thread option
M	Metric
S	SAE / UNC

Code	Nominal pressure
35	350 bar
42	420 bar

Code	Seal
N	NBR
V	FPM

Schematic PVACRE*

Example for PVACRE* mounted



Dimensions PVACRE*

