

# DF2089

Duplex Filters

Max. 350 l/min. 30 bar



## Heavy duty duplex operation

Cast iron housing with pressure rating up to 40 bar features in-to out flow to keep the particles away even during the filter change. Differential pressure switch mounted on the filter for easy access. Several media options allow lube, fuel and hydraulic use – pre-filtration with magnets as option.



## Contact Information:

Parker Hannifin  
**Hydraulic Filter Division Europe**

**European Product  
Information Centre**  
**Freephone: 00800 27 27 5374**  
(from AT, BE, CH, CZ, DE, EE, ES,  
FI, FR, IE, IT, PT, SE, SK, UK)  
**[filtrationinfo@parker.com](mailto:filtrationinfo@parker.com)**

[www.parker.com/hfde](http://www.parker.com/hfde)

## Applications:

- Propulsion system lube oil filter
- Heavy fuel oil safety filter
- Medium pressure hydraulic systems

## Specification

### Duplex filter:

One reservoir can be closed for service, vertical installation.

### Connections:

Square flanges with port size 60 mm. Standard delivery includes blind counter flanges. Optionally available with SAE 2"-3000M flange adapters.

### Maximum operating pressure:

30 bar

### Seal material:

Fluoroelastomer

### Operating temperature:

-20°C...+120°C with Fluoroelastomer seals,  
-20°C...+160°C with metal mesh elements and Fluoroelastomer seals.

### Housing material:

Cast iron (GJS)

### Weight:

65 kg

### Nominal flow rate (30 cSt):

350 l/min (21 m³/h)

### Bypass valve:

Standard bypass opening pressure 2.0 bar, optional opening pressure 1.6 bar or blocked bypass

### Indicator options:

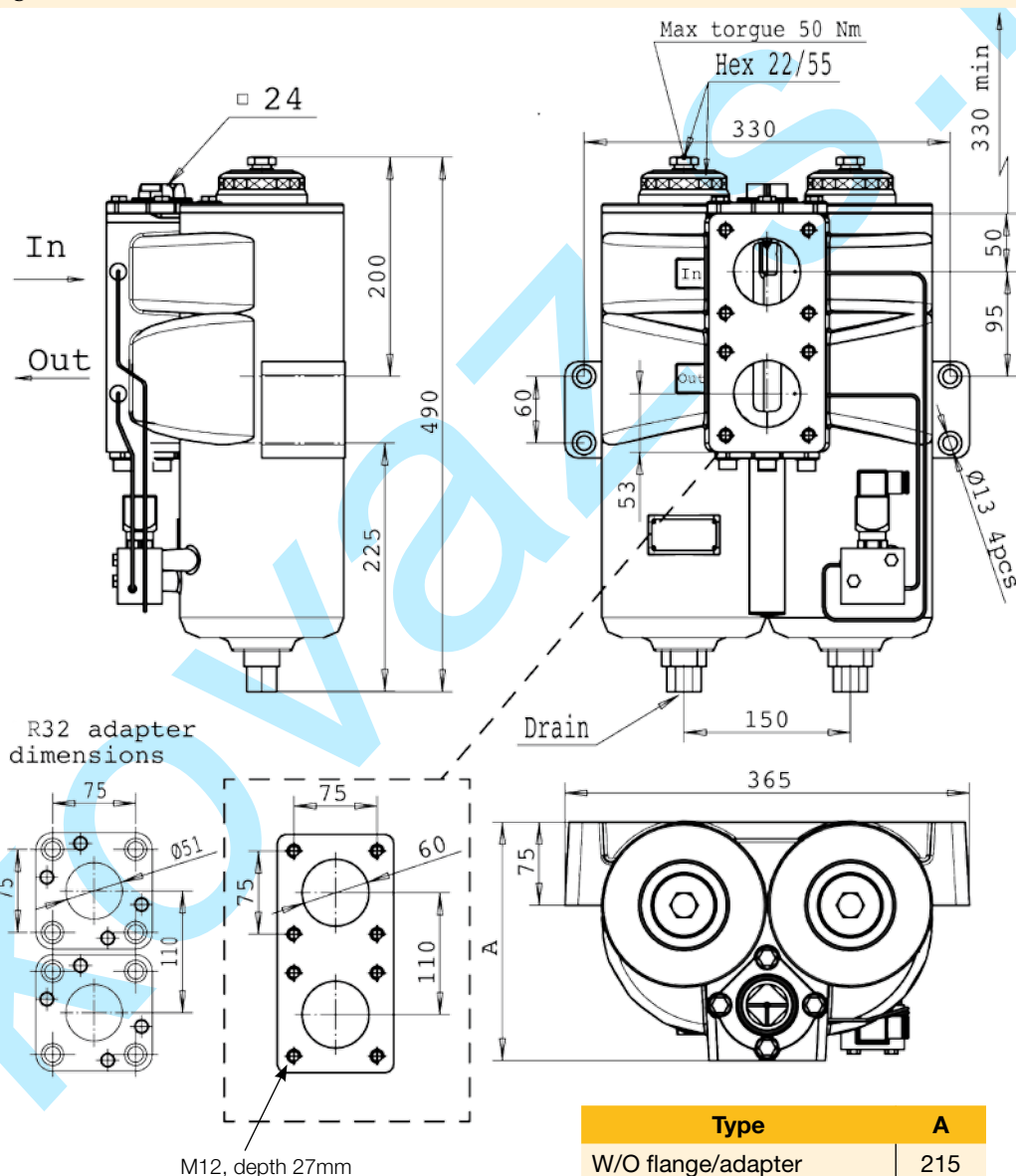
Visual, electrical or electronic indicator requires an indicator block. For details see indicator options table in product description page and catalogue section 4.

### Filtration materials:

- Glassfibre Microglass III
- Cleanable metal mesh

### Fluid compatibility:

Suitable for use with regular hydraulic and lubrication oils and fuel oils. Filters are delivered with documentation according PED 97/23/EC category II (required for heavy fuel oils). For other fluids consult Parker Filtration.



Type	A
W/O flange/adapter	215
With X60 flange	232
With R32 adapter	245

# DF2089

## Pressure Drop Curves

$$\Delta p_{\text{total}} = \Delta p_{\text{housing}} + \Delta p_{\text{element}}$$

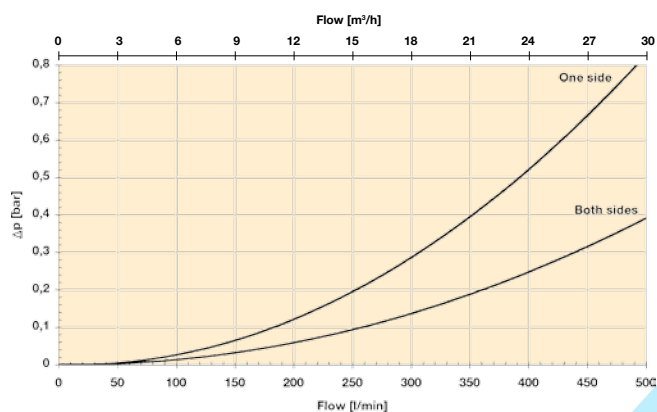
The recommended level of the initial pressure drop for this filter is maximum 0.5 bar.

$\Delta p$ -curves are measured at 30 cSt.

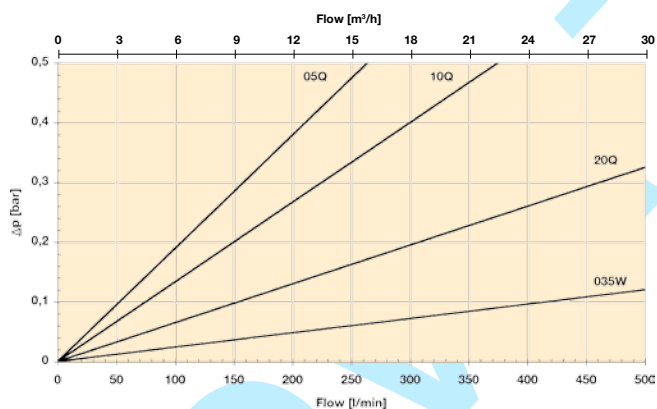
If the medium used has a viscosity different from 30 cSt, pressure drop over the element can be estimated as follows:

$$\Delta p_{\text{total}} = \Delta p_{\text{housing}} + \Delta p_{\text{element}} \times \frac{\text{working viscosity}}{30 \text{ cSt}}$$

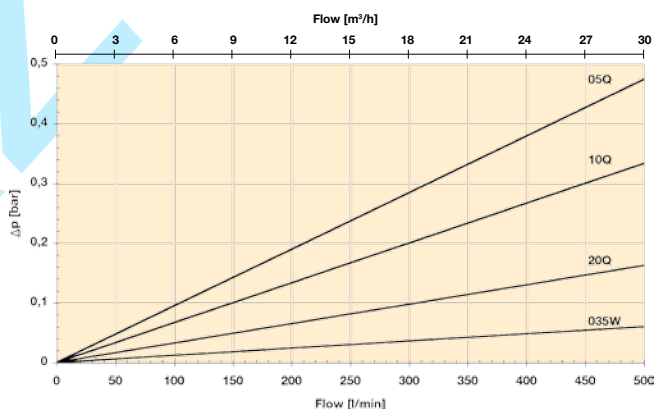
DF2089 housing



DF2089 elements/one side



DF2089 elements/both sides



## Product Description for DF2089

### Complete Filter:

Table 1

--

Table 2

--

Table 3

--

Table 4

--

Table 5

--

Table 6

--

Table 7

--

Table 8

--

Table 1

FILTER TYPE	
Model	CODE
Duplex filter	<b>DF2089</b>

Table 2

FILTER SIZE	
Element length	CODE
Length 1	<b>1</b>

Table 3

DEGREE OF FILTRATION	
Element type	CODE
<b>Microglass III</b>	
Glassfibre 5 µm	05Q
Glassfibre 10 µm	<b>10Q</b>
Glassfibre 20 µm	<b>20Q</b>
<b>Other medias</b>	
Cleanable metal mesh 35 µm	035W
Cleanable metal mesh 60 µm	060W

Table 4

SEAL TYPE	
Seal material	CODE
Fluoroelastomer	<b>V</b>

Table 5

INDICATORS	
Options	CODE
No indicator block	<b>N</b>
Indicator port plugged	<b>P</b>
Visual indicator	<b>M3</b>
Electrical indicator	<b>T1</b>
Electronic indicator (PNP/N.O.)	F1
Electronic indicator (NPN/N.O.)	F2

Table 6

BYPASS VALVE	
Bypass/indicator setting	CODE
1.6 bar/1.0 bar	<b>F</b>
2.0 bar/1.5 bar	<b>H</b>
No/No	<b>X</b>

Table 7

FILTER CONNECTIONS	
Port size	CODE
Square flange 60 mm	<b>X60</b>
Flange adapter SAE 2"-3000M	R32

Table 8

OPTIONS	
Options	CODE
With bypass, no magnets	<b>1</b>
No bypass, no magnets	2
With bypass and magnets	3
No bypass, with magnets	4

REPLACEMENT ELEMENTS WITH FLUOROELASTOMER SEALS	
Media code	Order code
<b>Glassfibre</b>	<b>Microglass III</b>
05Q	938364Q
10Q	<b>938075Q</b>
20Q	<b>938005Q</b>
<b>Cleanable metal mesh</b>	
035W	939184
060W	939185

SPARE PARTS	
Seal kit	CODE
<b>Seal material</b>	
Fluoroelastomer	916045077

Please note the bolded options reflect standard options with reduced lead-time.