

Ball Valves, Standard Series

This range of valves with **fluoropolymer seals**, available in compact, standard and lockable series, covers many **industrial applications** for which the fluids conveyed and working temperatures require this seal material.

Product Advantages

Optimised Installation

- Full fluid flow
- Long or butterfly lever
- Corrosion resistance
- A lockable version for operational safety
- Good value/performance ratio

Wide Compatibility

- Numerous compatible fluids
- Can be used for low and medium pressure applications
- Surface treatment for corrosion protection

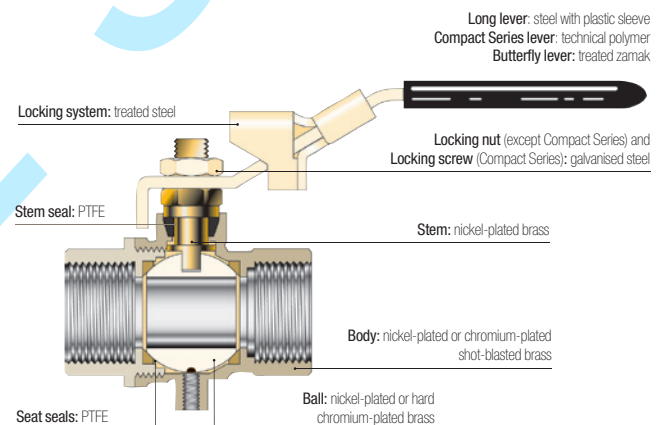


Technical Characteristics

Model	Standard and Lockable Series	Compact Series
Compatible Fluids	Compressed air, gas, water, water vapour, oil and all fluids compatible with the component materials	
Working Pressure	0 to 30 bar	0 to 35 bar
Working Temperature	-20°C to +130°C	-10°C to +90°C

Reliable performance is dependent upon the type of fluid conveyed.

Component Materials



Silicone-free

Regulations

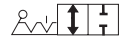
Industrial

DI: 97/23/EC (module PED A - EC diameters greater than 25 mm)
DI: Machinery Directive 2006/42/EC
DI: 2002/95/EC (RoHS)
RG: 1907/2006 (REACH)
DI: 89/392/EC

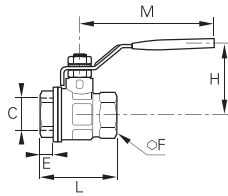
Standard Series

4902

2/2 Standard In-Line Ball Valve, Female BSPP Thread



Nickel-plated brass, PTFE



C	DN		PN	E	F	H	L	M	kg
G1/4	10	4902 10 13	30	11	20	43	51.5	98	0.154
G3/8	10	4902 10 17	30	11.4	20	43	51.5	98	0.138
G1/2	15	4902 15 21	30	13.5	25	47	55	98	0.202
G3/4	20	4902 20 27	30	12.5	31	58	57.5	122	0.322
G1	25	4902 25 34	30	15	38	60	69.5	122	0.468
G1¼	32	4902 32 42*	25	17	48	77	81.5	153	0.794
G1½	40	4902 40 49*	25	18	54	83	95	153	1.082
G2	50	4902 50 48*	25	22	66	95	113	162	1.787
G2½	65	4902 65 47*	30	22	85	132	136	255	4.500
G3	80	4902 80 46*	30	25	99	140	157	255	5.840
G4	100	4902 01 45*	30	29	125	154	191	255	9.040

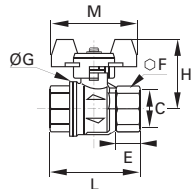
*Models with CE marking
Model from 2½": double stem seal in FPM
Working temperature: -40°C to +170°C

BVGT4-C

2/2 Standard In-Line Ball Valve, Female BSPP Thread



Sand-blasted nickel-plated brass, PTFE



C	DN		E	F	G	H	L	M	kg
G1/4	8	BVGT4-1/4C	9	20	25	40	39	50	0.130
G3/8	10	BVGT4-3/8C	9	20	25	40	39	50	0.120
G1/2	15	BVGT4-1/2C	11	25	32.5	44	50	50	0.180
G3/4	20	BVGT4-3/4C	12	31	39	49	54	50	0.265
G1	25	BVGT4-1C	14	38	47.5	53	67	50	0.390

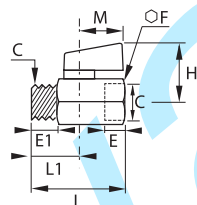
Compact lever

4991

2/2 Standard Compact In-Line Ball Valve, Male/Female BSPP Thread



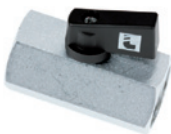
Chromium-plated brass, PTFE



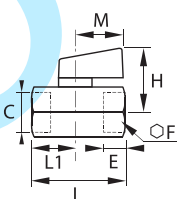
C	DN		E	E1	F	H	L	L1	M	kg
G1/8	6	4991 00 10	10	10	21	30	41.5	10	24	0.091
G1/4	8	4991 00 13	11	11	21	30	41.5	11	24	0.087
G3/8	8	4991 00 17	11	11	21	30	41.5	10.5	24	0.087
G1/2	10	4991 00 21	13	13	25	32	49	12.5	24	0.134

4992

2/2 Standard Compact In-Line Ball Valve, Female BSPP Thread



Chromium-plated brass, PTFE



C	DN		E	F	H	L	L1	M	kg
G1/8	6	4992 00 10	10	21	30	41.5	10	24	0.110
G1/4	8	4992 00 13	11	21	30	41.5	11	24	0.106
G3/8	8	4992 00 17	11	21	30	41.5	10.5	24	0.094
G1/2	10	4992 00 21	13	25	32	49	12.5	24	0.142

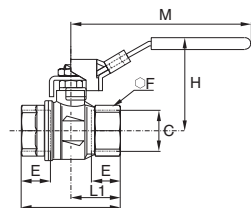
Standard Series

BVG4-LOCK

2/2 In-Line Lockable Ball Valve, Female BSPP Thread



Sand-blasted nickel-plated brass,
PTFE



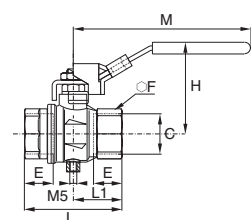
C	DN		E	F	H	L	L1	M	kg
G1/4	8	BVG4-1/4LOCK	12	20	47.5	45	22.5	96	0.154
G3/8	10	BVG4-3/8LOCK	12	20	47.5	45	22.5	96	0.171
G1/2	15	BVG4-1/2LOCK	15.5	25	52	59	29.5	96	0.238
G3/4	20	BVG4-3/4LOCK	17	31	59.5	64	32	117	0.370
G1	25	BVG4-1LOCK	21	40	63.5	81	40.5	117	0.580

BVG4P-LOCK

2/2 In-Line Lockable Vented Ball Valve, Female BSPP Thread



Sand-blasted nickel-plated brass,
PTFE



C	DN		E	F	H	L	L1	M	kg
G1/4	8	BVG4P-1/4LOCK	12	20	47.5	45	22.5	96	0.155
G3/8	10	BVG4P-3/8LOCK	12	20	47.5	45	22.5	96	0.172
G1/2	15	BVG4P-1/2LOCK	15.5	25	52	59	29.5	96	0.239
G3/4	20	BVG4P-3/4LOCK	17	31	59.5	64	32	117	0.371
G1	25	BVG4P-1LOCK	21	40	63.5	81	40.5	117	0.581