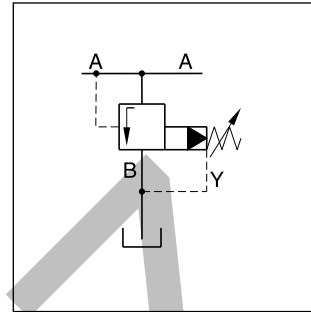
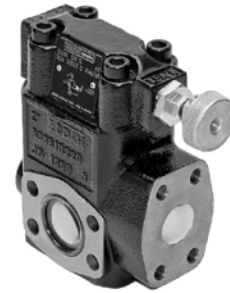


Pilot operated pressure unloading valves series R5U have a similar design to the subplate mounted R4U series. The SAE flanges allow to mount the valve directly on the outlet flanges of pumps.

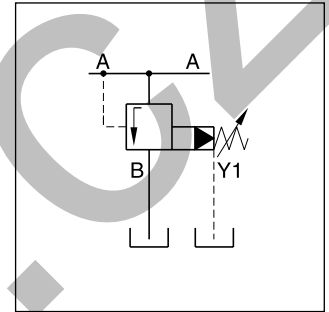
A typical application is the unloading of a pump in an accumulator circuit. The combination of an R5U, C5V and R5V on a double pump generates a high pressure / low pressure pump system without the need of a manifold block or piping between the valves.

Features

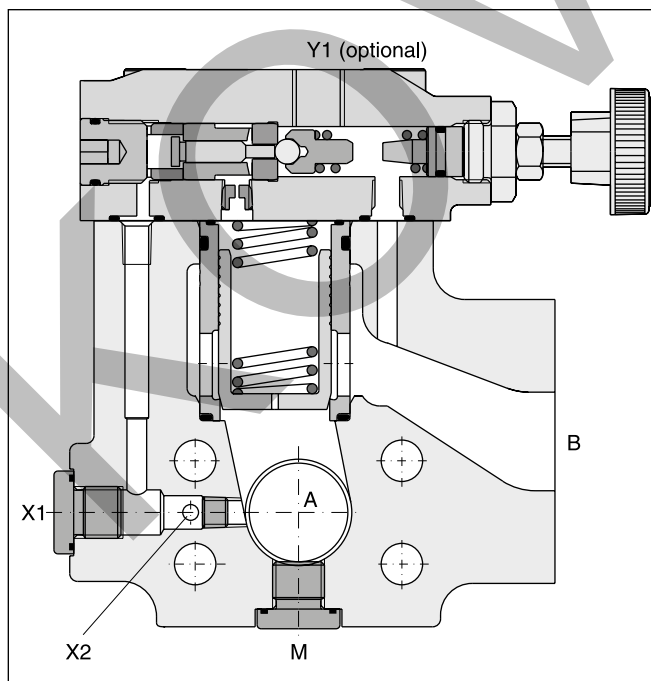
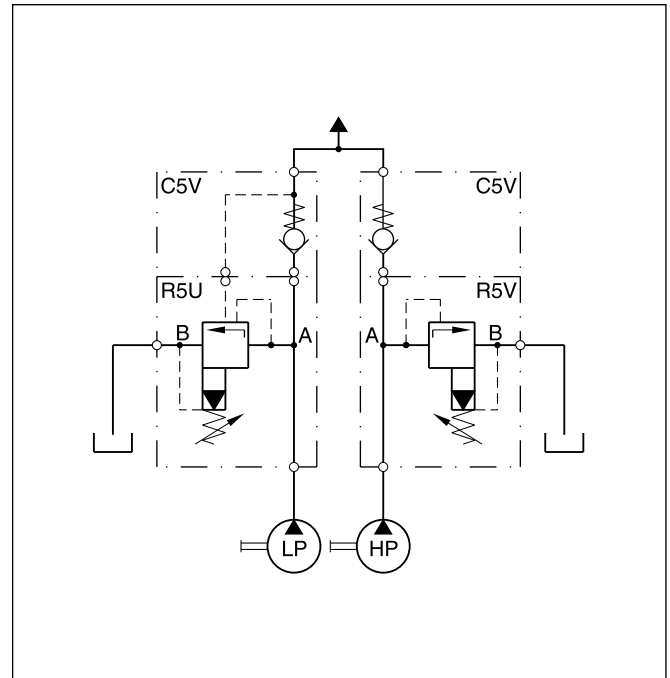
- Pilot operated unloading valve
- 3-port body with SAE61 flange
- 4 sizes (SAE $\frac{3}{4}$ ", 1", 1 $\frac{1}{4}$ ", 1 $\frac{1}{2}$ ")
- 3 pressure stages
- 3 adjustment modes
 - Hand knob
 - Acorn nut with lead seal
 - Cylinder lock
- With optional vent function



R5U 3-port internal drain



R5U 3-port external drain

**High pressure / low pressure system**

9

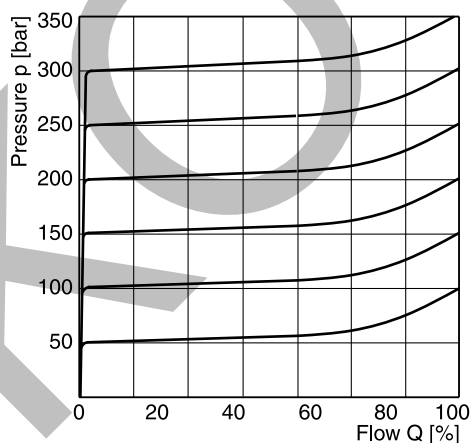
Further options on request

3) Only for vent valve function code 09.

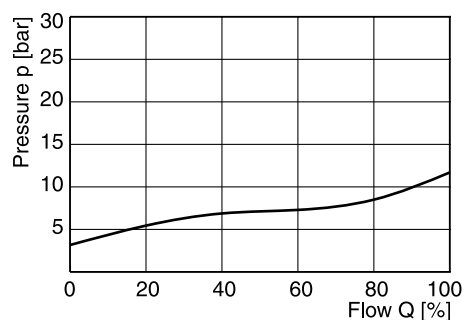
Technical data

General							
Size		06 (¾")		08 (1")		10 (1¼")	
Mounting		Flanged according to SAE61					
Mounting position		unrestricted					
Ambient temperature		[°C]		-20...+60			
MTTF _D value		[years]		75			
Weight		[kg]		3.6		4.6	
				5.2		8.0	
Hydraulic							
Max. operating pressure		[bar]					
Ports A, B, X		350		350		280	
Ports Y, Y1		30		30		30	
Pressure stages		[bar]		105, 210, 350			
Nominal flow		[l/min]		90		300	
				600		600	
Fluid		Hydraulic oil according to DIN 51524					
Fluid temperature		[°C]		-20...+70 (NBR: -25...+70)			
Viscosity		permitted		[cSt] / [mm²/s]		20 ... 400	
		recommended		[cSt] / [mm²/s]		30...80	
Filtration		ISO 4406 (1999); 18/16/13					
Electrical							
Duty ratio		100 % ED; CAUTION: coil temperature up to 150 °C possible					
Protection class		IP65 in accordance with EN 60529 (with correctly mounted plug-in connector)					
		Code		G0R		G0Q	
				GAR		GAG	
Supply voltage		[V]		12 V =		24 V =	
		[V]		98 V =		205 V =	
Tolerance supply voltage		[%]		±10		±10	
Current consumption		hold		[A]		2.72	
		in rush		[A]		1.29	
Power consumption		hold		[W]		32.7	
		in rush		[W]		31	
Solenoid connection		Connector as per EN175301-803, solenoid identification as per ISO 9461					
Wiring min.		[mm²]		3 x 1.5 recommended			
Wiring length max.		[m]		50 recommended			

p/Q performance curve



Minimum pressure curve



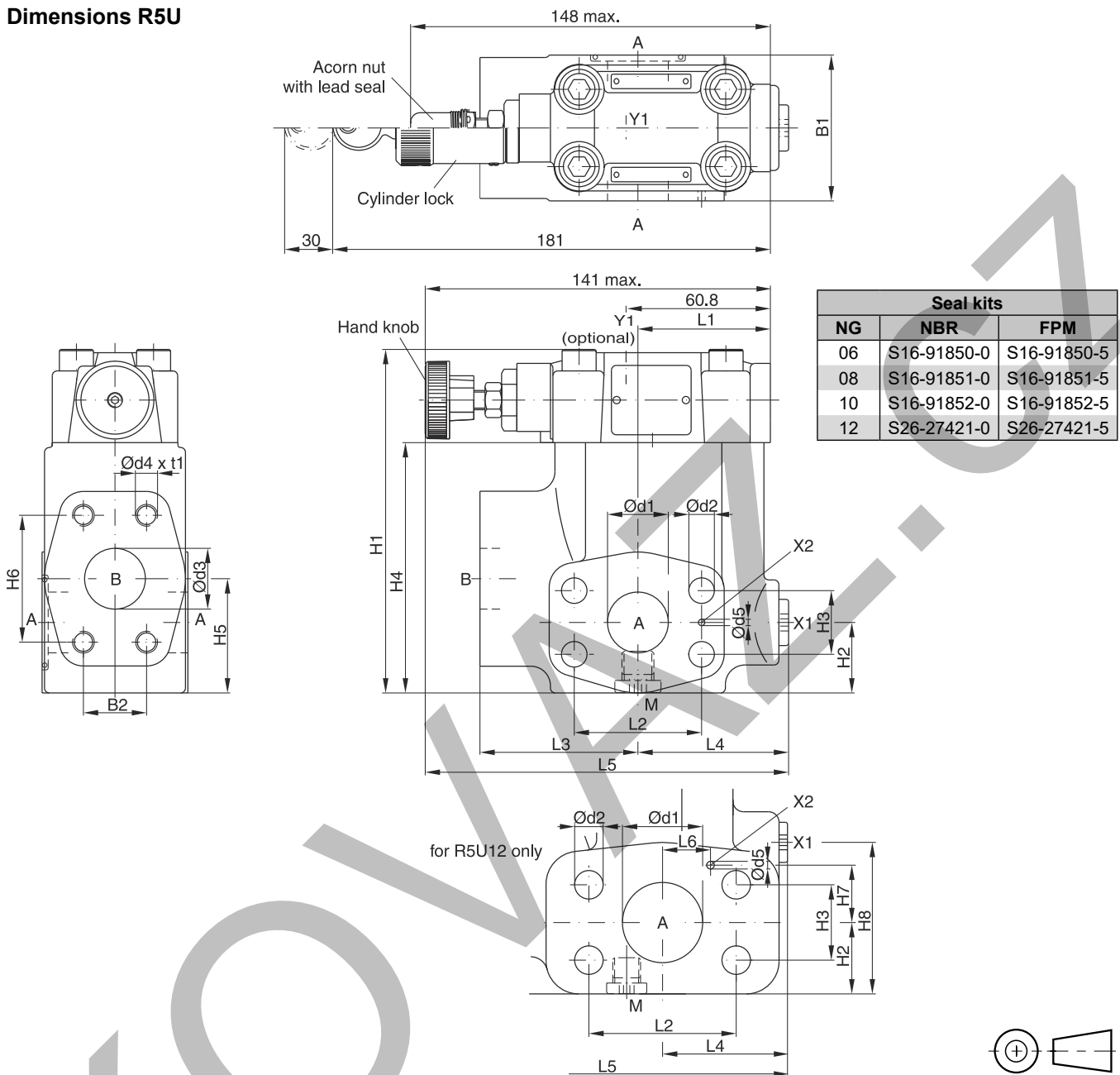
All characteristic curves measured with HLP46 at 50 °C.

The performance curves are measured with external drain.
For internal drain the tank pressure has to be added to curve.

Dimensions

Pilot Operated Pressure Unloading Valve Series R5U

Dimensions R5U

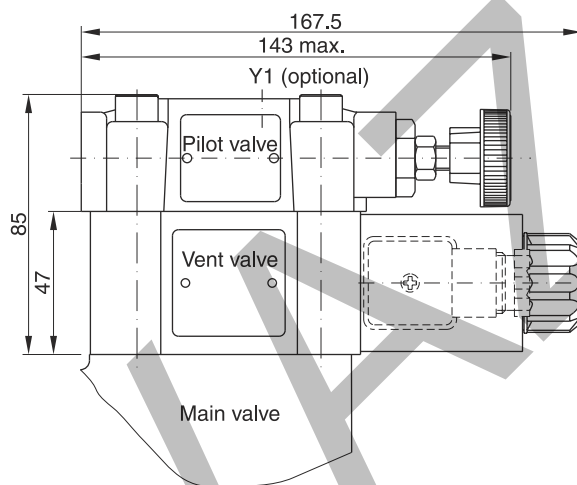
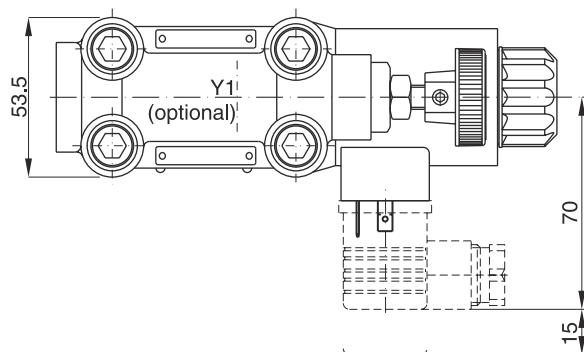


NG	B1	B2	H1	H2	H3	H4	H5	H6	L1	L2	L3	L4	L5	d1	d2	d3	d4	t1	d5	L6	H7	H8
06	60	22.2	119	29.5	22.2	81	41	47.6	50.3	47.6	63	60	152	19	10.5	19	3/8"-16 UNC	20	3.0	—	—	—
08	60	26.2	141	30.5	26.2	103	47	52.4	55.8	52.4	65	62	149	25	10.5	25	3/8"-16 UNC	23	3.0	—	—	—
10	75	30.2	151	37.5	30.2	113	65	58.7	57.8	58.7	61	68	150.5	32	12.5	30	7/16"-14 UNC	22	3.0	—	—	—
12	80	35.7	178	35.5	35.7	140	73	69.8	37.3	69.8	92.5	59.2	171.2	38	13.5	38	1/2"-13 UNC	27	3.0	22.4	27.2	72

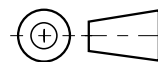
Port	Function	Port size			
		R5U06	R5U08	R5U10	R5U12
A (2)	Pressure	3/4" SAE61	1" SAE61	1 1/4" SAE61	1 1/2" SAE61
B	Tank	3/4" SAE61	1" SAE61	1 1/4" SAE61	1 1/2" SAE61
X1	External pilot port ¹⁾	G 1/4"	G 1/4"	G 1/4"	G 1/4"
Y1	External drain	G 1/4"	G 1/4"	G 1/4"	G 1/4"
M	Pressure gauge	G 1/4"	G 1/4"	G 1/4"	G 1/4"

¹⁾ Closed when supplied.

Dimensions R5U with vent function



Seal kits	
NBR	FPM
DC solenoid	
S56-40609-0	S56-40609-5
AC solenoid	
S26-35237-0	S26-35237-5



Code	Internal drain	External drain
11		
09		