

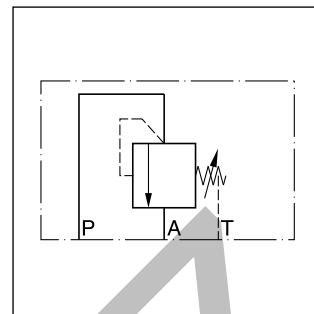
Direct operated pressure relief valve with manual adjustment. The series VB can also be used as a pressure sequence valve, because of the high pressure capability in the outlet port and the external drain port.

Features

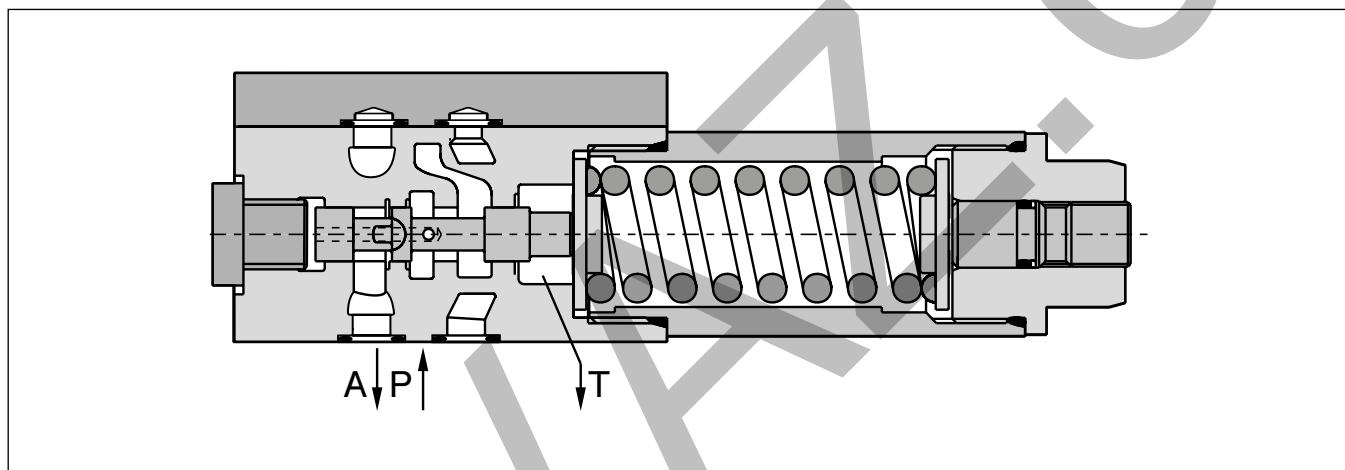
- Spool type valve
- Subplate mounting according to ISO 5781
- 5 pressure stages
- 2 adjustment modes



VB*A06



VB*A06

VB*A06**Ordering code**

VB		A	06	V	G		
Pressure relief valve	Pressure stages	Adjustment screw with hexagon socket	Nominal size NG06	FPM seals	Gauge port G 1/4"	Lock	Design series (not required for ordering)

Code	Pressure stages
025	up to 25 bar
064	up to 64 bar
160	up to 160 bar
210	up to 210 bar
350	up to 350 bar

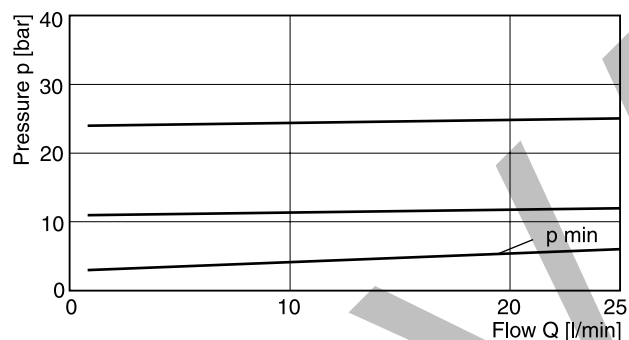
Code	Lock
omit	—
Z	Cylinder lock

Bold letters =
Short-term availability

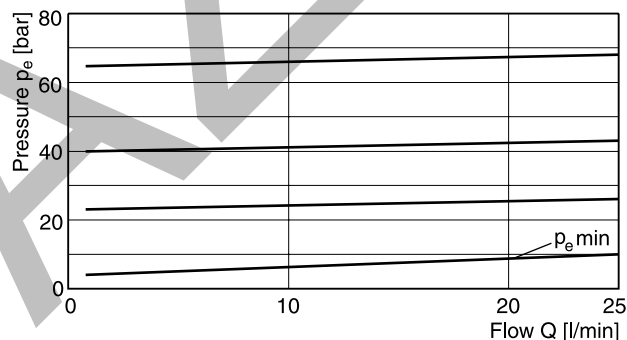
General			
Design		Direct operated pressure relief valve, spool type	
Nominal size		NG06 (CETOP 03 / NFPA D03)	
Interface		Subplate mounting according to ISO 5781	
Mounting position		unrestricted	
Ambient temperature		[°C]	-20...+60
MTTF _D value		[years]	150
Weight		[kg]	1.3
Hydraulic			
Max. operating pressure		[bar]	Port P and A 350 Port T depressurized
Pressure stages		[bar]	25, 64, 160, 210, 350
Nominal flow		[l/min]	25
Fluid		Hydraulic oil according to DIN 51524	
Fluid temperature		[°C]	-20...+70
Viscosity	permitted	[cSt] / [mm²/s]	20...400
	recommended	[cSt] / [mm²/s]	30...80
Filtration		ISO 4406; 18/16/13	

p/Q performance curves

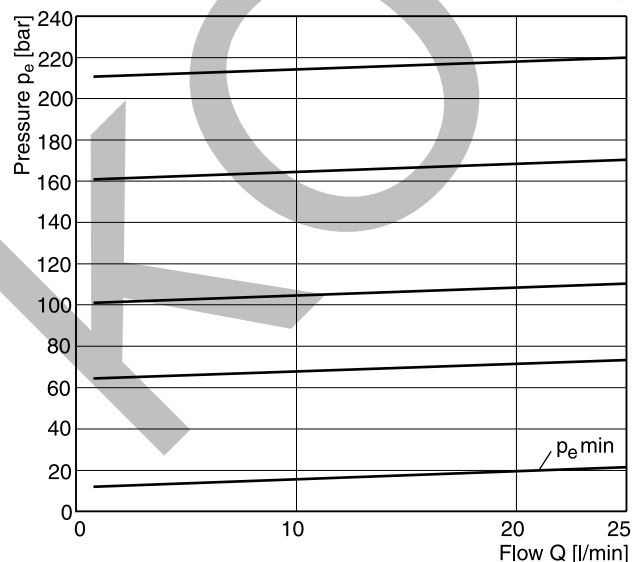
Setting pressure max. 25 bar



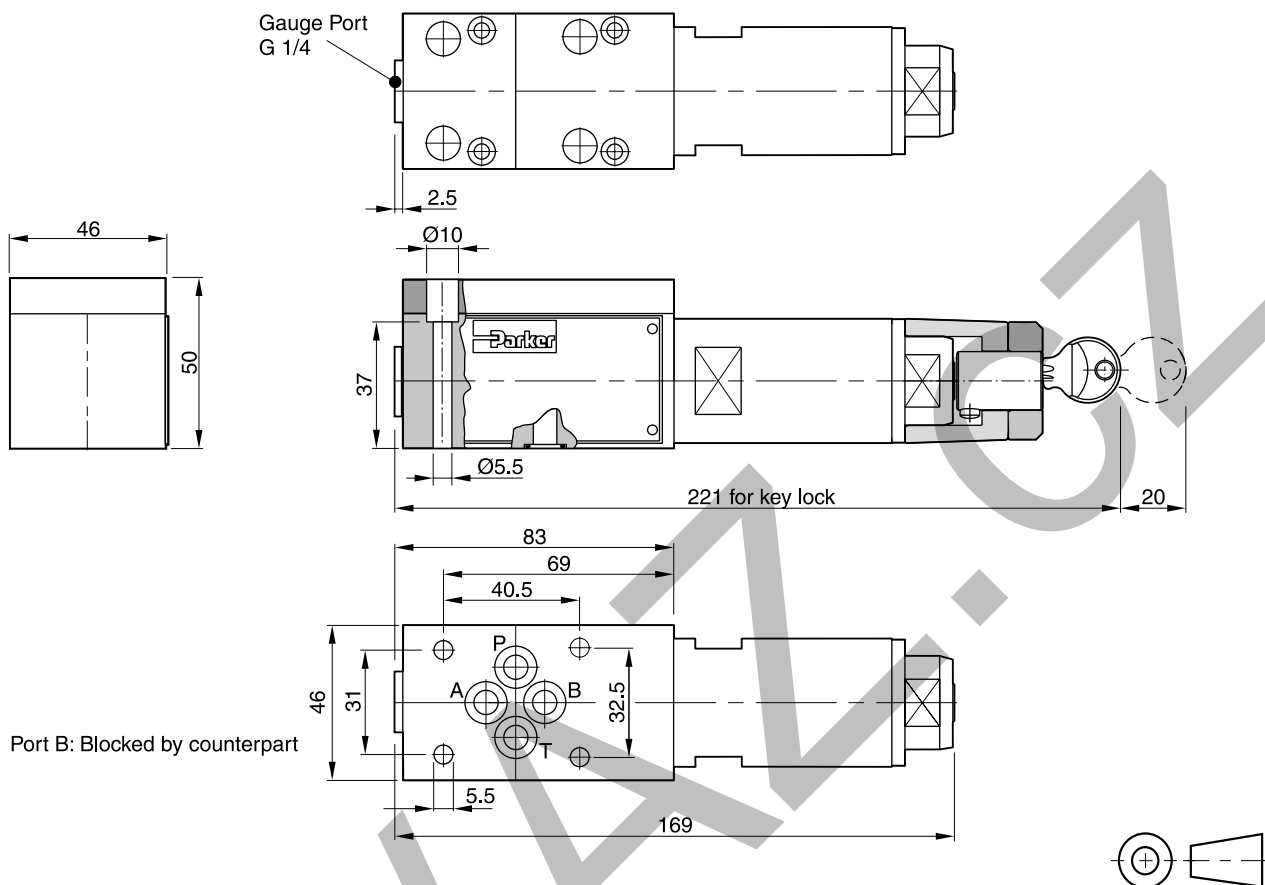
Setting pressure max. 64 bar




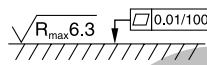


Setting pressure max. 160 or 210 bar



All characteristic curves measured with HLP46 at 50 °C.



Surface finish	Bolt kit			 Kit FPM
 $R_{\text{max}} 6.3$ $0.01/100$	BK443	4x M5x45 ISO 4762-12.9	7.6 Nm ±15 %	SK-VB/VM/VS-A06V

Mounting pattern ISO 5781-03-04-0-00

