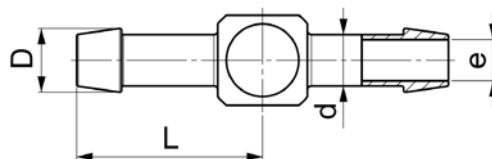


Gerade Tülle

Douille droite double

Straight hose nozzle



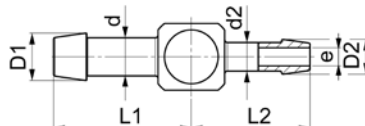
LO CV 1000

Type -d	Mat.-Nr.	L	D	e	kg/100
LO CV 1000-1,5	366.1000.015	8.0	2.0	1.0	0.060
LO CV 1000-2	366.1000.020	9.0	2.5	1.4	0.070
LO CV 1000-2,5	366.1000.025	10.5	3.0	1.9	0.120
LO CV 1000-3	366.1000.030	12.0	3.7	2.3	0.060
LO CV 1000-4	366.1000.040	14.5	5.0	3.2	0.325

Gerade Tülle reduziert

Douille droite double réduite

Straight hose nozzle reduced



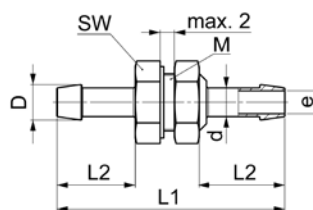
LO CV 1000 RED

Type -d -d2	Mat.-Nr.	L1	L2	D1	D2	e	kg/100
LO CV 1000-2-1,5	366.1004.013	9.0	8.0	2.5	2.0	1.0	0.060
LO CV 1000-2,5-1,5	366.1004.010	10.5	8.5	3.0	2.0	1.0	0.110
LO CV 1000-2,5-2	366.1004.012	10.5	9.5	3.0	2.5	1.4	0.110
LO CV 1000-3-1,5	366.1004.014	12.0	9.0	3.7	2.0	1.0	0.180
LO CV 1000-3-2	366.1004.020	12.0	10.0	3.7	2.5	1.4	0.180
LO CV 1000-4-1,5	366.1004.028	14.5	9.5	5.0	2.0	1.0	0.290
LO CV 1000-4-2	366.1004.030	14.5	10.5	5.0	2.5	1.4	0.300
LO CV 1000-4-2,5	366.1004.035	14.5	11.5	5.0	3.0	1.9	0.310
LO CV 1000-4-3	366.1004.040	14.5	12.5	5.0	3.7	2.3	0.320

Tülle mit Schottbefestigung

Douille traversée de cloison

Panel mount hose nozzle



LO CV 1500

Type -d	Mat.-Nr.	M	SW	L1	L2	D	e	kg/100
LO CV 1500-1,5	366.1500.006	M5	7	20.0	6.0	2.0	1.0	0.240
LO CV 1500-2	366.1500.020	M5	7	22.0	7.0	2.5	1.4	0.240
LO CV 1500-2,5	366.1500.030	M5	7	24.0	8.0	3.0	1.9	0.250
LO CV 1500-3	366.1500.050	M5	7	26.0	9.0	3.7	2.3	0.260
LO CV 1500-4	366.1500.090	M8x1	10	32.0	11.0	5.0	3.2	0.670
LO CV 1500-4 (G 1/8)	366.1501.060	G 1/8	12	34.0	11.0	5.0	3.2	1.060