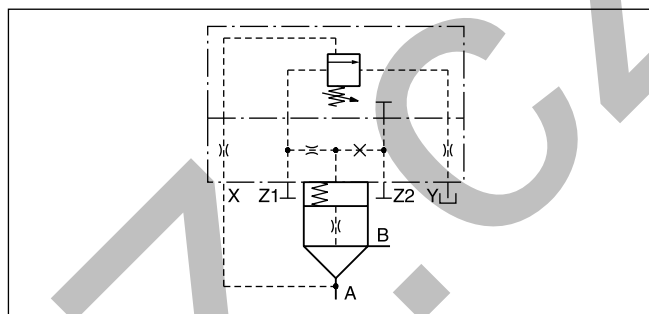
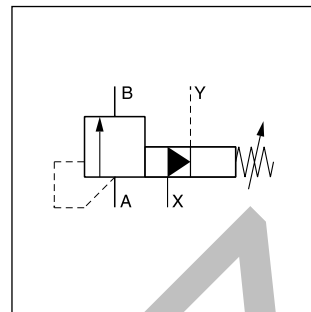


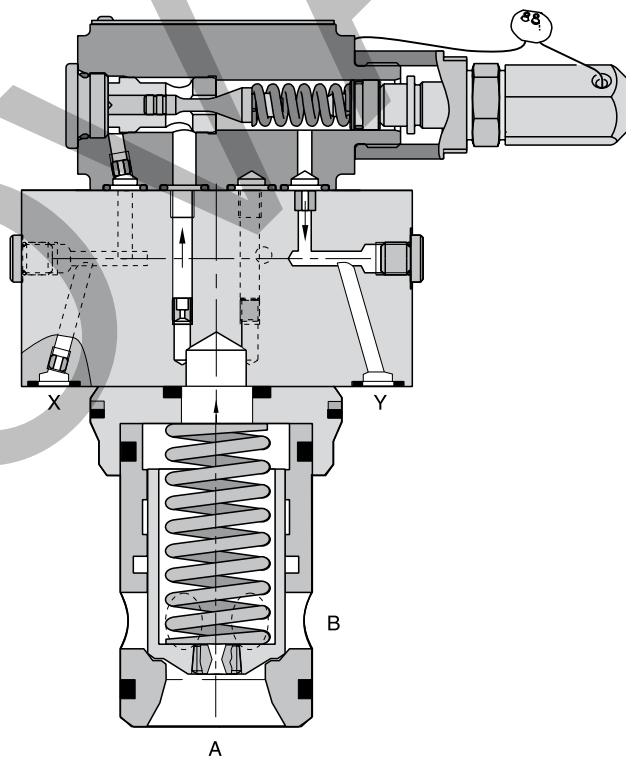
The pilot operated pressure relief valves series DSDU limit the system pressure by opening the pressure port to tank. They are mostly used for accumulator pressure relief. The valve is set and sealed by the German technical monitoring association TÜV. The valve delivery includes a copy of the TÜV certificate of conformity.

Features

- TÜV certificate
- CE certification (module G) according to directive 2014/68/EU
- Installation cavity and mounting pattern according to ISO 7368
- 3 sizes, NG16 to NG32
- Remote control via port X



Detailed symbol

8

Ordering code

	DSDU			TÜV	
	Pressure relief valve	Type code	Pressure stage	Desired opening pressure in bar (please specify)	

Code	Seals
omit	NBR
V	FPM

Type Code			Pressure stage	Opening pressure ranges [bar]
1078 E16	1078 E25	1078 E32		
Q _{max} [l/min] depending on opening pressure				
150	215	500	B	50 - 75
165	235	550	E	76 - 125
190	280	640		126 - 175
215	310	750	G	176 - 200
230	355	800		201 - 250
255	390	900	K	251 - 300
280	400	950		301 - 350

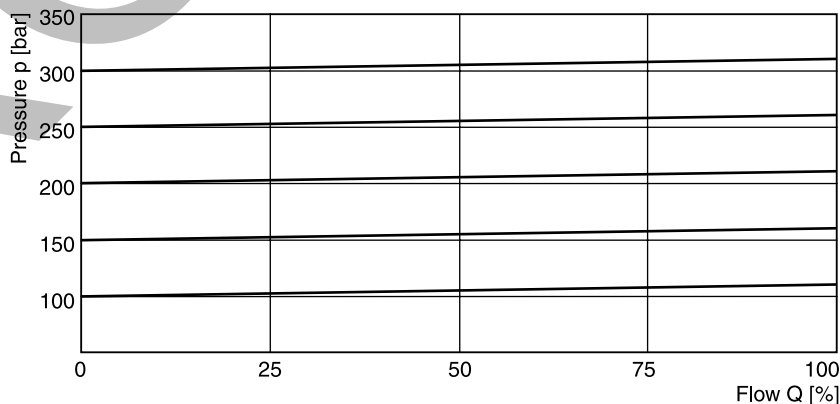
Ordering examples

DSDU 1078 E32E - 120 bar matches Q_{max} 550 l/min, opening pressure 120 barDSDU 1078 E32E - 150 bar matches Q_{max} 640 l/min, opening pressure 150 bar

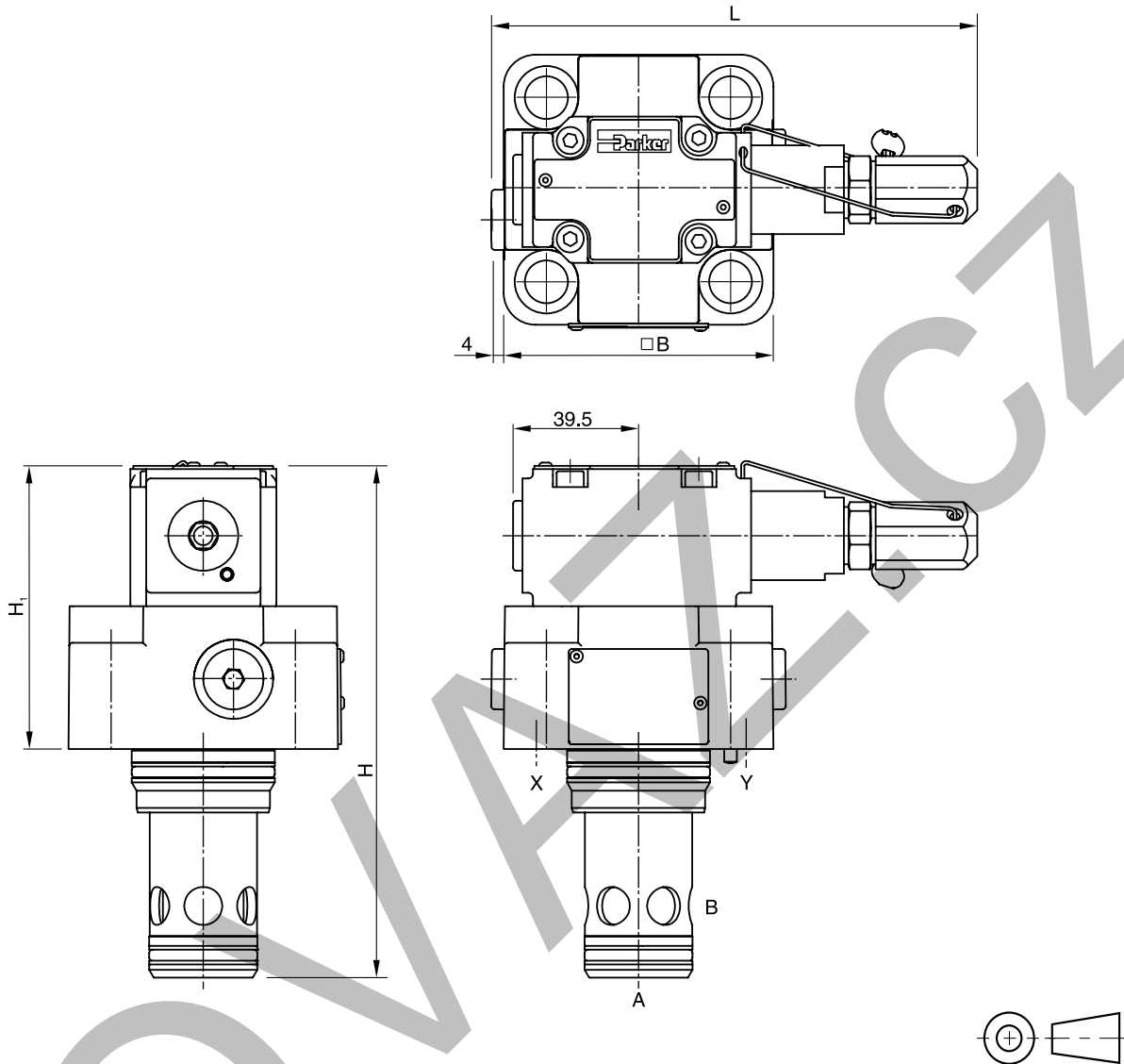
Technical data

General			
Size		NG16	NG25
Interface		Slip-in mounting according to ISO 7368	
Mounting position		as desired, horizontal mounting preferred	
Ambient temperature	[°C]	-20...+60	
MTTF _D value	[years]	150	
Weight	[kg]	2.2	3.5
			4.9
Hydraulic			
Max. operating pressure	[bar]	Ports A and X 350, B and Y depressurized	
Pilot oil		External / external	
Adjustment pressure	[bar]	See ordering code	
Nominal flow	[l/min]	See ordering code	
Fluid		Hydraulic oil according to DIN 51524	
Fluid temperature	[°C]	-10...+70	
Viscosity, permitted	[cSt] / [mm²/s]	20...400	
Viscosity, recommended	[cSt] / [mm²/s]	30...80	
Filtration		ISO 4406; 18/16/13	

p/Q curve



8



NG	H	H ₁	B	L
16	141	85	79 *	162
25	162	90	85	156
32	182	97	102	162

NG	Kit	ISO 4762-12.9	[Nm]	NBR	FPM
16	BK414	4 x M8x40	31.8	SK-DSDU10-E16	SK-DSDU10-E16V
25	BK391	4 x M12x50	108	SK-DSDU10-E25	SK-DSDU10-E25V
32	BK415	4 x M16x55	264	SK-DSDU10-E32	SK-DSDU10-E32V

* Width 65 mm.