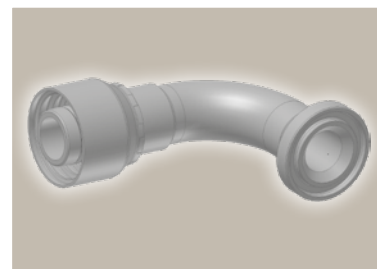
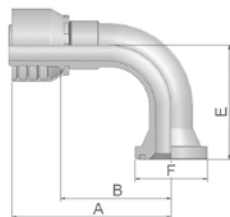


19

ISO 6162-1-Flange 90° Elbow

ISO 12151-3 – E – L – SFL 90°
(21.0 MPa/ 3000 psi)







| Part Number | | Hose I.D. | | | | Flange | A | B | E | F |
|-------------|-------------|-----------|-------|------|------|--------|-----|-----|-----|----|
| 46 series | 48 series | DN | Inch | Size | mm | Inch | mm | mm | mm | mm |
| 11946-8-8 | 11948-8-8 | 12 | 1/2 | -8 | 12.7 | 1/2 | 64 | 41 | 41 | 30 |
| 11946-12-8 | 11948-12-8 | 12 | 1/2 | -8 | 12.7 | 3/4 | 70 | 47 | 43 | 38 |
| 11946-12-10 | 11948-12-10 | 16 | 5/8 | -10 | 15.9 | 3/4 | 78 | 53 | 52 | 38 |
| 11946-16-10 | 11948-16-10 | 16 | 5/8 | -10 | 15.9 | 1 | 78 | 53 | 53 | 45 |
| 11946-12-12 | 11948-12-12 | 19 | 3/4 | -12 | 19.1 | 3/4 | 80 | 54 | 58 | 38 |
| 11946-16-12 | 11948-16-12 | 19 | 3/4 | -12 | 19.1 | 1 | 80 | 54 | 58 | 45 |
| 11946-20-12 | 11948-20-12 | 19 | 3/4 | -12 | 19.1 | 1 1/4 | 80 | 54 | 54 | 51 |
| 11946-12-16 | 11948-12-16 | 25 | 1 | -16 | 25.4 | 3/4 | 98 | 68 | 70 | 38 |
| 11946-16-16 | 11948-16-16 | 25 | 1 | -16 | 25.4 | 1 | 98 | 68 | 70 | 45 |
| 11946-20-16 | 11948-20-16 | 25 | 1 | -16 | 25.4 | 1 1/4 | 98 | 68 | 69 | 51 |
| | 11948-24-16 | 25 | 1 | -16 | 25.4 | 1 1/2 | 100 | 70 | 62 | 60 |
| | 11948-16-20 | 31 | 1 1/4 | -20 | 31.8 | 1 | 129 | 82 | 90 | 45 |
| 11946-20-20 | | 31 | 1 1/4 | -20 | 31.8 | 1 1/4 | 124 | 86 | 90 | 51 |
| | 11948-20-20 | 31 | 1 1/4 | -20 | 31.8 | 1 1/4 | 130 | 83 | 90 | 51 |
| 11946-24-20 | | 31 | 1 1/4 | -20 | 31.8 | 1 1/2 | 124 | 86 | 90 | 60 |
| | 11948-24-20 | 31 | 1 1/4 | -20 | 31.8 | 1 1/2 | 129 | 82 | 90 | 60 |
| | 11948-32-20 | 31 | 1 1/4 | -20 | 31.8 | 2 | 130 | 83 | 67 | 71 |
| | 11948-24-24 | 38 | 1 1/2 | -24 | 38.1 | 1 1/2 | 149 | 111 | 104 | 60 |
| | 11948-32-24 | 38 | 1 1/2 | -24 | 38.1 | 2 | 139 | 101 | 104 | 71 |
| | 11948-24-32 | 51 | 2 | -32 | 50.8 | 1 1/2 | 154 | 106 | 104 | 60 |
| | 11948-32-32 | 51 | 2 | -32 | 50.8 | 2 | 180 | 132 | 138 | 71 |

To select corresponding half-flange and O-ring see section Eb.

Approved **fitting series** for hose types, depending on size:

Also available in stainless steel. Details can be found in CAT 4400.1/UK

| | | | | | | | | | | | | | | | | | | |
|---|----|-------|---|-------|-------|-------|---------|-------|-------|-------|------------|-------|-------|------------|-------|-------|-----|-----|
|  | 46 | or |  | 48 | 441 | 461LT | 462 | 462TC | 462ST | 629PU | 692PU Twin | | | | | | | |
|  | 46 | 463 | 492 | 492ST | 492TC | 692 | 692Twin | 692TC | BCH1 | | | | | | | | | |
|  | 48 | 301SN | 304 | 387 | 387ST | 387TC | 421RH | 421SN | 426 | 421TC | 436 | 441RH | 462PU | 462PU Twin | BCH2 | HT2 | ... | |
| | | 471TC | 477 | 477ST | 477TC | 477RH | 487 | 487ST | 487TC | 493 | 787 | 787TC | 787ST | 797 | 797TC | 797ST | 811 | 881 |