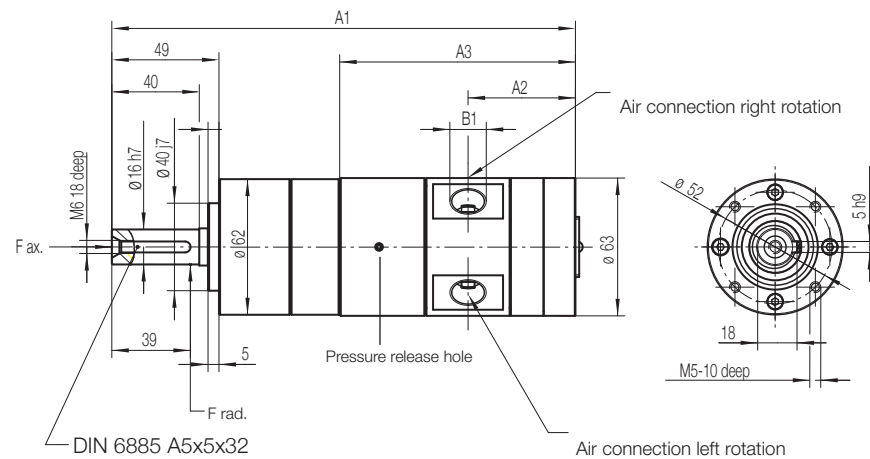


Dimensions (mm)

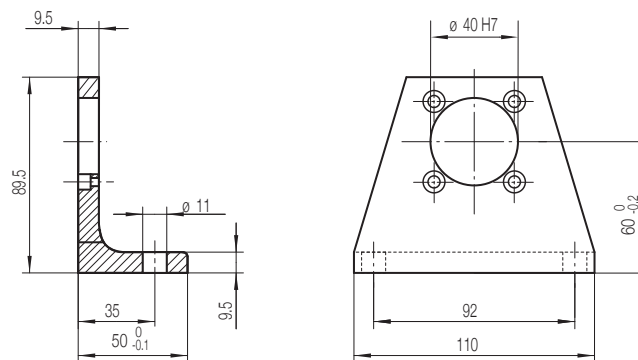
Motor P1V-M020C



Motors have 2 or 3 openings at the outside of the gearbox which must stay open in order to guarantee troublefree operation.

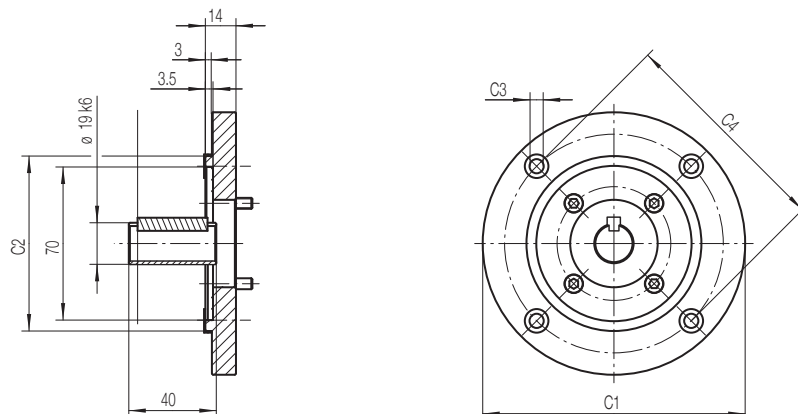
Foot bracket

P1V-MF4



Flanges

P1V-MF8, P1V-MF9



| Motor size | | | | Dimensions (mm) | | | |
|------------|----------------------|----------------------|----------------------|-----------------|----|----|------|
| | | | | A1 | A2 | A3 | B1 |
| 200 watts | P1V-M020C0230 | P1V-M020C0034 | | 192.5 | 39 | 88 | G1/8 |
| | P1V-M020C0146 | P1V-M020C0021 | P1V-M020C0008 | 208.5 | 39 | 88 | G1/8 |
| | P1V-M020C0054 | P1V-M020C0012 | P1V-M020C0003 | 224 | 39 | 88 | G1/8 |

| Motor type | | Dimensions (mm) | | | |
|------------|----------------------------|-----------------|-------|----|-----|
| | | C1 | C2 | C3 | C4 |
| P1V-M020C | (IEC80 B5) P1V-MF9 | 200 | 130f7 | 11 | 165 |
| | (IEC80 B14) P1V-MF8 | 120 | 80f7 | M6 | 100 |