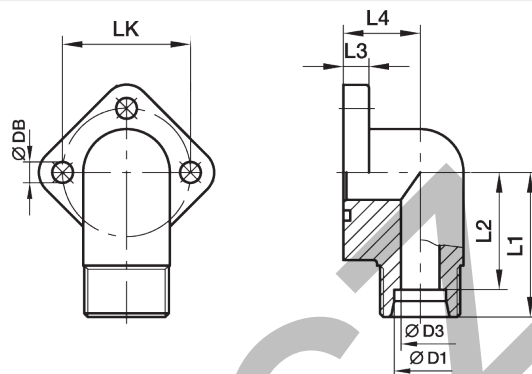


BFW3 Gear pump flange 90° elbow 3 holes

Hydraulic flange / EO 24° cone end



BFW-3 90° Flange connection EO 24° cone end

| LK | D1 ²⁾ | D3 | L1 | L2 | L3 | L4 | DB | Bolts (metr.) | O-ring | Weight (steel) kg/piece | Order code* | PN (bar) ¹⁾ CF |
|----|------------------|----|----|------|------|------|-----|------------------|--------|-------------------------------|----------------------|---------------------------------|
| 30 | 12L | 9 | 31 | 24.0 | 9.0 | 17.0 | 6.5 | M 06×22 | 16×2.5 | 0.20 | BFW3-12L/LK30 | 250 |
| 30 | 15L | 11 | 31 | 24.0 | 9.0 | 17.0 | 6.5 | M 06×22 | 16×2.5 | 0.22 | BFW3-15L/LK30 | 250 |
| 30 | 18L | 12 | 31 | 23.5 | 9.0 | 17.0 | 6.5 | M 06×22 | 16×2.5 | 0.25 | BFW3-18L/LK30 | 160 |
| 40 | 22L | 18 | 36 | 28.5 | 11.5 | 23.0 | 8.5 | M 08×30 | 24×2.5 | 0.44 | BFW3-22L/LK40 | 160 |
| 40 | 28L | 19 | 36 | 28.5 | 11.5 | 23.0 | 8.5 | M 08×30 | 24×2.5 | 0.45 | BFW3-28L/LK40 | 160 |

¹⁾ Pressure shown = Item deliverable

²⁾ L = light series

$\frac{PN \text{ (bar)}}{10} = PN \text{ (MPa)}$

Delivery without nut and ring.

Information on ordering complete fittings
or alternative sealing materials see page N12.

*Please add the **suffixes** below according
to the material/surface required.

| Order code suffixes | | | |
|---------------------------------|-----------------------------------|--|--|
| Material | Suffix surface and material | Example incl. metr. bolts and O-ring | Standard sealing material (no additional suffix needed) |
| Steel, zinc plated, Cr(VI)-free | CF | BFW3-12L/LK30OMDCF | NBR |