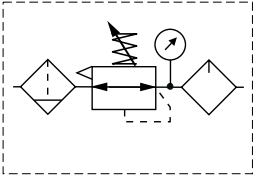
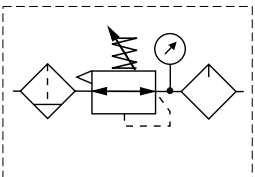


Popular Combinations



Filter + Regulator + Lubricator Combinations  
40 micron element, 12 bar Regulator + Gauge and Wall Mounting Bracket

Port size	Combined Manual/Semi-Auto Drain	Flow dm <sup>3</sup> /s	Weight (kg)	Auto Drain	Flow dm <sup>3</sup> /s	Weight (kg)
G <sup>3</sup> / <sub>4</sub>	<b>P3YCB16SGCNFLNF</b>	91	3.3	<b>P3YCB16SGANFLNF</b>	91	3.3
G1	<b>P3YCB18SGCNFLNF</b>	174	3.3	<b>P3YCB18SGANFLNF</b>	174	3.3



Filter/Regulator + Lubricator Combinations  
40 micron element, 12 bar Regulator + Gauge and Wall Mounting Bracket

Port size	Combined Manual/Semi-Auto Drain	Flow dm <sup>3</sup> /s	Weight (kg)	Auto Drain	Flow dm <sup>3</sup> /s	Weight (kg)
G <sup>3</sup> / <sub>4</sub>	<b>P3YCA16SGCNFLNF</b>	101	2.8	<b>P3YCA16SGANFLNF</b>	101	2.8
G1	<b>P3YCA18SGCNFLNF</b>	168	2.8	<b>P3YCA18SGANFLNF</b>	168	2.8

\* Flow measured with 10 bar inlet pressure, 6.3 bar set pressure, 1 bar pressure drop.

Options:

<b>P 3 Y</b>	<b>C</b>				<b>S G</b>		<b>N</b>		<b>L N F</b>
Filter/Regulator + Lub	<b>A</b>	BSPP (G)	<b>1</b>	3/4	<b>6</b>	Combined Manual/Semi Auto Drain	<b>C</b>	0 - 12 bar with gauge	<b>F</b>
Filter + Regulator + Lub	<b>B</b>	NPT	<b>9</b>	1	<b>8</b>	Auto Drain	<b>A</b>	0 - 16 bar with gauge	<b>J</b>