

## CV-CK

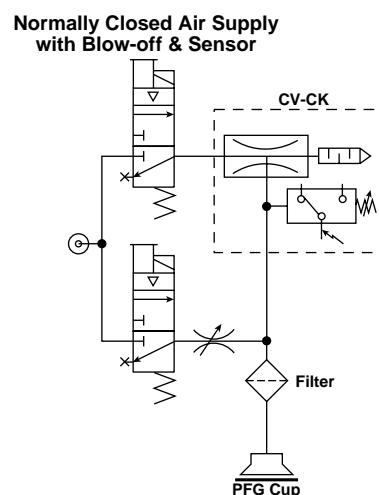
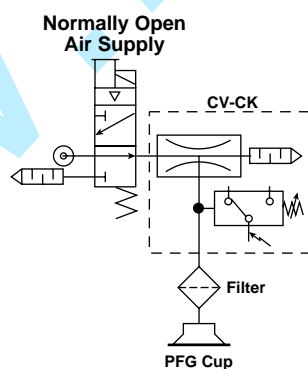
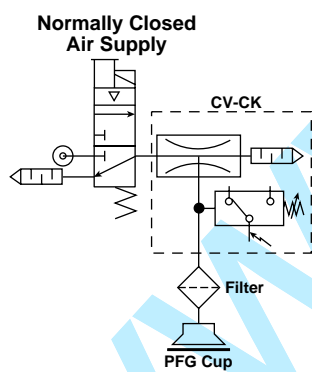


### Features

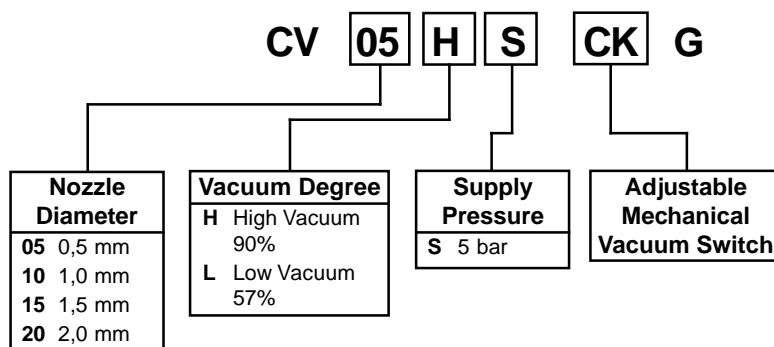
- Adjustable Switch Between - 0,20 and - 0,53 bar
- Standard Anodized Aluminium Body
- Vacuum Levels - 0,58 or - 0,92 bar
- Vacuum Flow Rates from 6 to 165 l/min

### Characteristics

The CV-CK Series venturi is supplied with an adjustable open contact switch for vacuum confirmation. The switch point ranges between 0,20 and 0,53 bar with a hysteresis of 0,03 to 0,13 bar. The mechanical switch option is a cost effective method to confirm part presence.



## Model Number Index



Includes exhaust port silencer.

## Specifications

<b>Media</b>	Non-Lubricated Compressed Air, Non-Corrosive Gases
<b>Operating Pressure</b>	1 to 8 bar
<b>Operating Temperature</b>	0 to 60 °C
<b>Material</b>	<b>Body:</b> Aluminium <b>Nozzle:</b> Nickel Plated Brass
<b>Setting Range</b>	0,20 to 0,53 bar
<b>Accuracy</b>	± 0,05 bar
<b>Hysteresis</b>	0,04 to 0,13 bar
<b>Air Circuit</b>	Normally Open
<b>Switch Output</b>	AC125V: 5A, AC250V: 3A, DC250V: 0.2A

## Performance

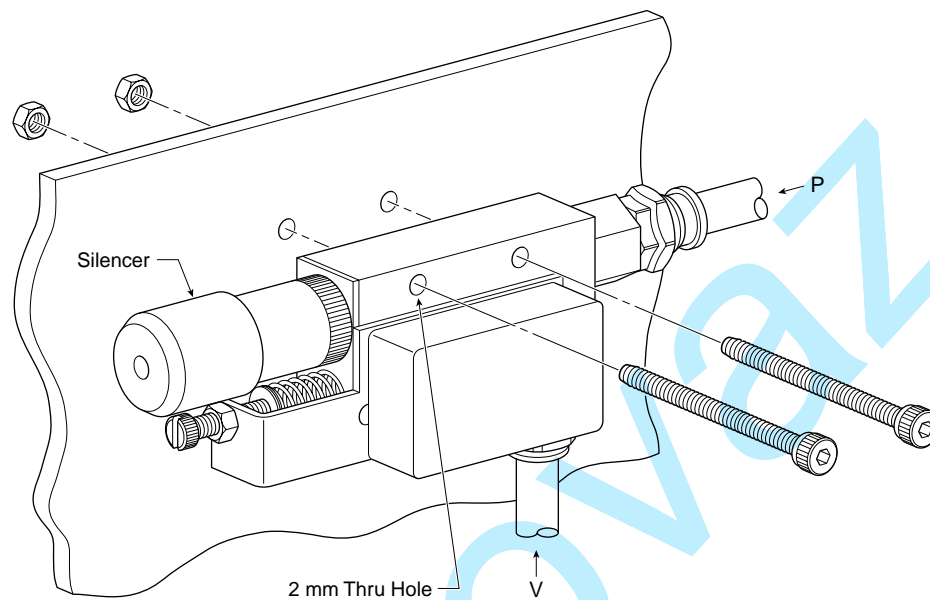
Item	Nozzle Diameter [mm]	Vacuum Degree at 5 bar [%]	Vacuum Flow [l/min]	Air Consumption [l/min]	Weight [g]
CV05HSCKG CV05LSCKG	0,5	86 57	6 9,	13	119
CV10HSCKG CV10LSCKG	1,0	92 57	27 36	44	119
CV15HSCKG CV15LSCKG	1,5	92 57	63 95	100	190
CV20HSCKG CV20LSCKG	2,0	92 57	110 165	180	458

## Evacuation Time

Series / Nozzle Diameter	Air Supply Pressure [bar]	Air Consumption [l/min]	Evacuation Time in sec / liter to reach different Vacuum Levels [%]								
			10	20	30	40	50	60	70	80	90
CV-05HS	5	13	0,86	2,03	3,59	5,68	8,18	10,80	15,33	21,16	—
CV-05LS	5	13	0,39	0,83	1,41	2,28	3,90	—	—	—	—
CV-10HS	5	44	0,17	0,35	0,58	0,88	1,27	1,82	2,74	4,16	8,00
CV-10LS	5	44	0,13	0,27	0,46	0,72	1,17	—	—	—	—
CV-15HS	5	100	0,09	0,17	0,26	0,39	0,55	0,78	1,13	1,65	3,97
CV-15LS	5	100	0,07	0,11	0,18	0,27	0,43	—	—	—	—
CV-20HS	5	180	0,06	0,10	0,16	0,23	0,32	0,46	0,67	0,97	2,15
CV-20LS	5	180	0,05	0,09	0,13	0,21	0,40	—	—	—	—

## Replacement Components

Item	Model Number	Generator
Silencer	MSS-01	CV05HS/LSCCKG CV10HS/LSCCKG
Silencer	MSM-01	CV15HS/LSCCKG
Silencer	MSL-02	CV20HS/LSCCKG
Mechanical Switch	CV-CK-SWITCH	CV05 thru 20



## Installation

Install clip and secure CV-CK unit. Silencers are included with the CV-CK generator series. If a tube connector is selected for the exhaust port option, plumb the exhaust to an appropriate collector.

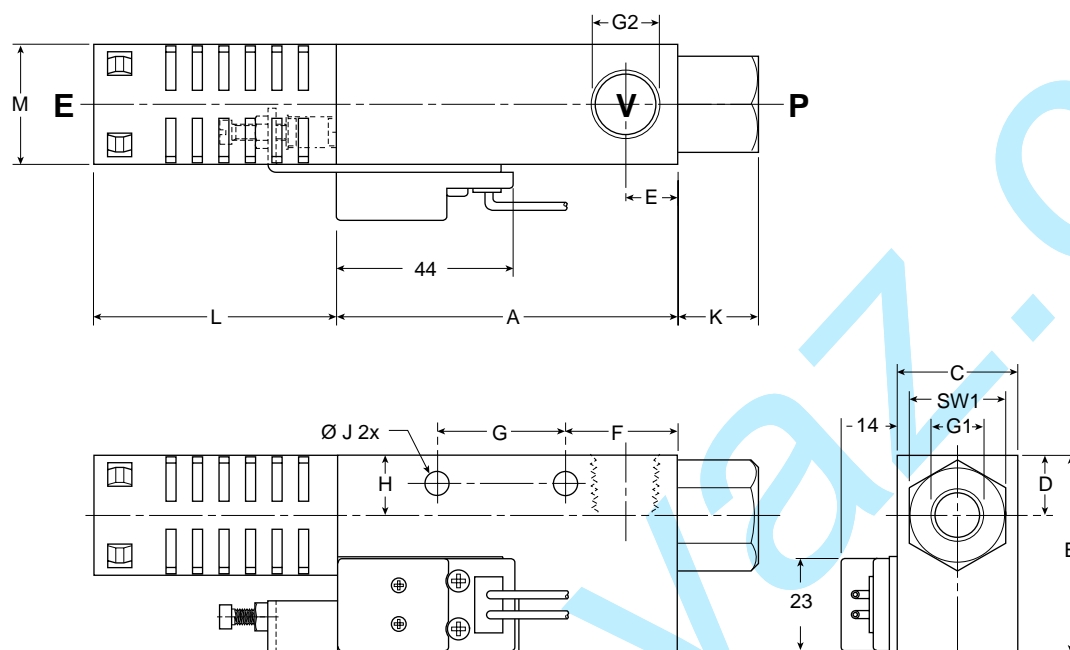
## Cautions

Do not operate CV-CK generators outside the temperature range and pressures listed in the specifications section of this catalog.

All normally closed valve supply circuits will interrupt the air supply to the venturi during a power failure or E-Stop condition. As a result, the product being transferred may be dropped, possibly creating a hazard to the surrounding environment. To avoid hazardous situations during a power loss or E-Stop condition, consider a normally open valve supply circuit or an E-Stop system.

It is always recommended to dedicate one suction cup to a single CV-CK generator for the best response and maximize the vacuum level per individual cup. If more than one cup is used per generator, the vacuum level of the pick-and-place system may drop to an unsafe level if one of the pads separates from the product.

# Dimensions



Item	A	B	C	D	E	F	G	H	J	K	L	M	G1	G2	SW1
CV05HS/LSCKG	45	33	16	10	8	14	20	4,5	4,2	10	36	18,5	BSPP 1/8	BSPP 1/8	14
CV10HS/LSCKG	45	33	16	10	8	14	20	4,5	4,2	10	36	18,5	BSPP 1/8	BSPP 1/8	14
CV15HS/LSCKG	63	35	20	11	10	20	25	5	4,5	15	45,5	20	BSPP 1/4	BSPP 1/4	17
CV20HS/LSCKG	85	40	30	15	13	28	32	7	6	20	60,5	30	BSPP 1/4	BSPP 3/8	24

Millimeter